



Municipal Profiles CD

User Manual

Table of Contents

Introduction.....	3
Minimum Requirements	3
Adobe Reader	3
SVG Viewer.....	3
Getting Started	4
Navigation Menu	4
Viewing a Profile	5
Profile Page.....	6
Contact Information.....	7
Capacity Assessment	7
Statistics.....	7
Budget and Government Funding.....	7
Location Information	7
Maps	8
Search	9
Trouble Shooting	10
FAQ	11

Introduction

The user manual is designed to familiarize new users with the municipal profiles application CD and to provide additional knowledge to users who are familiar with the product. This manual will focus on the tasks involved with setting up the application as well guidelines on how to use the product.

Minimum Requirements

Windows 98 Second Edition / 2000 Professional / XP

Internet Explorer 5.5 or Above

CD ROM Drive

Adobe Reader (included on CD)

SVG Viewer (included on CD)

Flash (Optional)

Adobe Reader

Adobe Reader is a program which displays PDF files. The help file for the Municipal profiles application is in PDF format. In order to view the help file, Adobe Reader is required.

This reader can be found in the AcrobatReader7 folder on the CD. Double click AdbeRdr70_enu_full.exe and follow the installation instructions. e.g. D:\AcrobatReader7\AdbeRdr70_enu_full.exe

SVG Viewer

Scalable Vector Graphics (SVG) is an XML markup language for describing two-dimensional vector graphics.

The Municipal profiles application uses SVG in order to render maps. Using the SVG component these maps can be dynamic and interactive. In order to view these maps, the Adobe SVG Viewer is required.

This viewer can be found in the SVG Viewer folder on the CD. Double click **SVGView.exe** and follow the installation instructions. e.g. D:\SVG\SVGView.exe

Getting Started

In order to start the municipal profile application, insert the CD into the drive. Once inserted, Windows will auto play the CD and internet explorer will be launched.

In the event the CD does not auto play you can manually execute the application. To do this, in windows explorer browse to the **dyncd** folder on the CD-ROM drive and double click **DynCD.exe**
e.g. D:\dyncd\ DynCD.exe

Navigation Menu

The navigation menu is located on the top of the page. This makes the menu relatively easy for the user to find. In addition it provides quick access to view profiles. The latter sections will explain how to use the navigation menu.




Viewing a Profile

In order to view a municipal profile, first select a province from the drop down list.

Once a province has been selected, all municipalities which are located in the selected province will be populated in the municipality drop down list

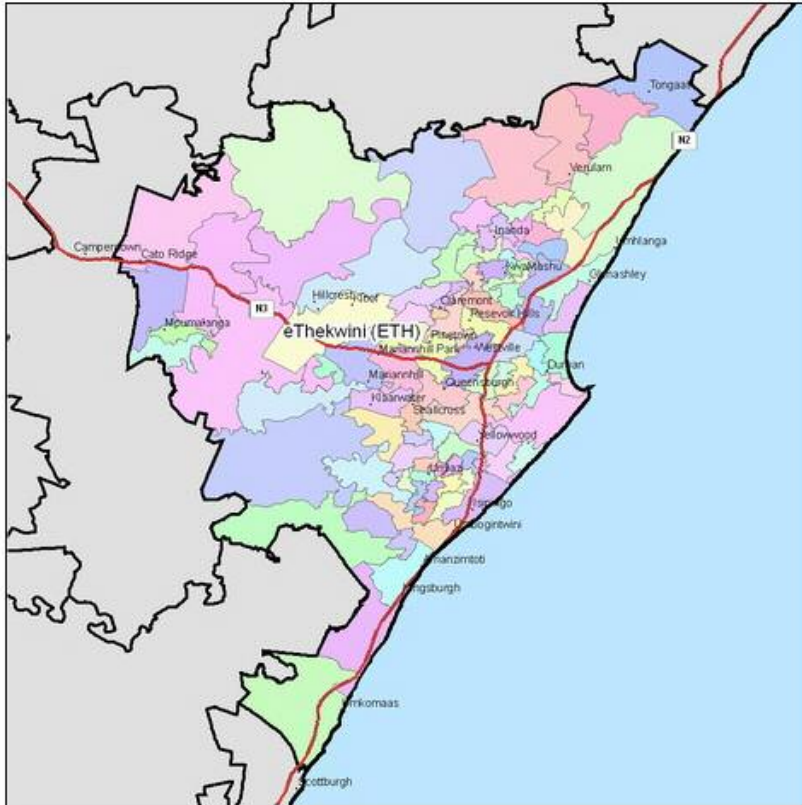
Once the desired municipality has been selected all wards located in the chosen municipality which be populated in the ward drop down list

Should you wish to view a profile for a municipality or ward, click the go button located next to their respective drop down list. Thereafter you will be directed to a mini portal page for the municipal profile.

Profile Page

Home » KwaZulu-Natal » eThekweni Metropolitan Municipality » Back



Contact Information

Statistics

Budget & Government Funding

Local Information



KwaZulu-Natal/eThekweni Metropolitan Municipality

Your search result is located in **KwaZulu-Natal** and in the Metropolitan municipality **eThekweni Metropolitan Municipality [Durban]**. The Metropolitan municipality of **Durban** consists of **100** wards. This municipality will have **200** councillors. The new name of the municipality is **eThekweni Metropolitan Municipality** and the geographical area of the municipality is **2291.64546** square kilometres.

Mayor

THEMBINKOSI OBED MLABA(ANC)
E-mail: dovec@durban.gov.za

The profile page display information pertaining to a municipality/ward. There are a few key elements on the namely:

- Bread Crumb Menu - shows the location of the current page in the total information structure. Each level of the hierarchy is labeled and functions as a link to that level. The current page is marked in order to give the users feedback about where they are currently.
- Map - This is a map of the of the municipality or ward
- Mini Portal - This section consists for a brief summary about the municipality/ward. In addition is contains the following information.

Contact Information

This module displays contacts information such as:

- Municipal manager
- Mayor
- Deputy Mayor
- Speaker

Capacity Assessment

This module displays general information about the municipality and the various functions which are performed by the municipality.

Statistics

This module displays statistic from the 2001 census. There are currently 32 variables available. Each variable as the values listed in a tabular format together with an accompanying bar graph.

Budget and Government Funding

This module display financial information such as:

- Operating budget
- Capital Budget
- Government Funding

Location Information

This module displays locations such as:

- Villages / Suburbs
- Schools
- Medical Facilities
- Police Stations
- Farms

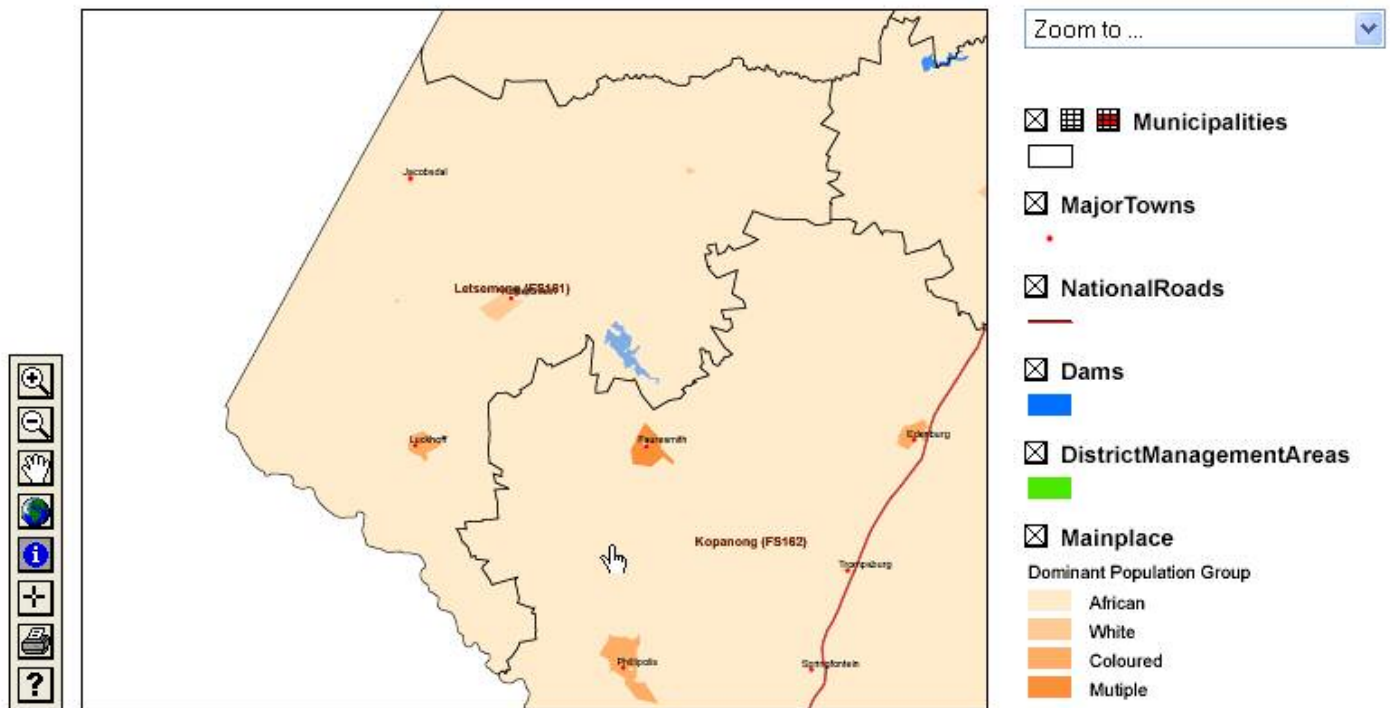
Maps

Maps may be view according to the following categories.

- Population Distribution and Dynamics - Population Group (Dominant), Population Density, Home Language (Dominant)
- Demographic Characteristics - Sex Ratio, Persons with Disabilities (Dominant), Socio-Economic, Persons 20+ years old with No Schooling, Economically Active Population
- Households and Housing - Dwelling Types, Household Size, Room Size, Cooking Energy Source, Heating Energy Source, Lighting Energy Source, Refuse Services, Sanitation Service, Telephone Services, Water Services

In order to view a map, select the map type from the drop down list and click go. You can zoom to a specific ward by selecting a municipality code from the zoom to drop down list.

Dominant Population Group



Search

In order to perform a search, click the search link on the navigation menu.

Search

Location Institution Farm

When performing a search, try to be as specific as possible. Only the first 100 results will be displayed.

First select the type of search from the radio buttons. Next, enter the keyword to search for in the search box. Thereafter the search results will be displayed. From the results page you can view the municipal profiles by clicking the hyper link.

Trouble Shooting

- In the event the CD does not auto play you can manually execute the application. To do this, in windows explorer browse to the **dyncd** folder on the CD-ROM drive and double click **DynCD.exe** e.g. D:\dyncd\ DynCD.exe
- If your browser shows a dialog asking to connect to the Internet, then select "Connect" or "Try again". The application runs from the Internet address **127.0.0.1** on port 9090, which is an Internet address, even though it is coming from the CD.
- If you select "Connect" and your browser tries to connect through your modem or through your network, then something is wrong with your Internet settings. The connection should be made - instantaneously. If this problem persists, keep cancelling and "Try again" until your browser gets the message!
- Windows XP with Service Pack 2 may show a security alert when you start the application. The application will function irrespective of whether you choose to block or unblock the program.



- If you have virus protection software, you may see a dialog saying that a malicious script has been detected. For municipal profiles application to continue, you will have to allow these scripts to run.
- If you have trouble viewing the maps, ensure you have installed the SVG viewer

FAQ

1. Who is the Municipal Demarcation Board?

2. What are Municipal Profiles?

3. How often are profiles updated?

4. Where is the stats information from?

The statistics for Municipal Profiles comes from Statistics South Africa. The data was gathered from the 2001 Census.

5. Will there be a Linux or OS2 version available.

Currently we do not have any plans for developing on a platform other than windows.

6. I insert the CD into the drive, but nothing happens?

In the event the CD does not auto play you can manually execute the application. To do this, in windows explorer browse to the **dyncd** folder on the CD-ROM drive and double click **DynCD.exe**
e.g. D:\dyncd\DynCD.exe

7. The maps are blank. How can I view them?

Please ensure that you have installed the SVG viewer. It can be found in the SVG folder on the CD
e.g. D:\SVG\SVGView.exe

8. I don't have flash will I be able to view the website?

Yes, we have two version of the application available. One html and the other flash enabled.