

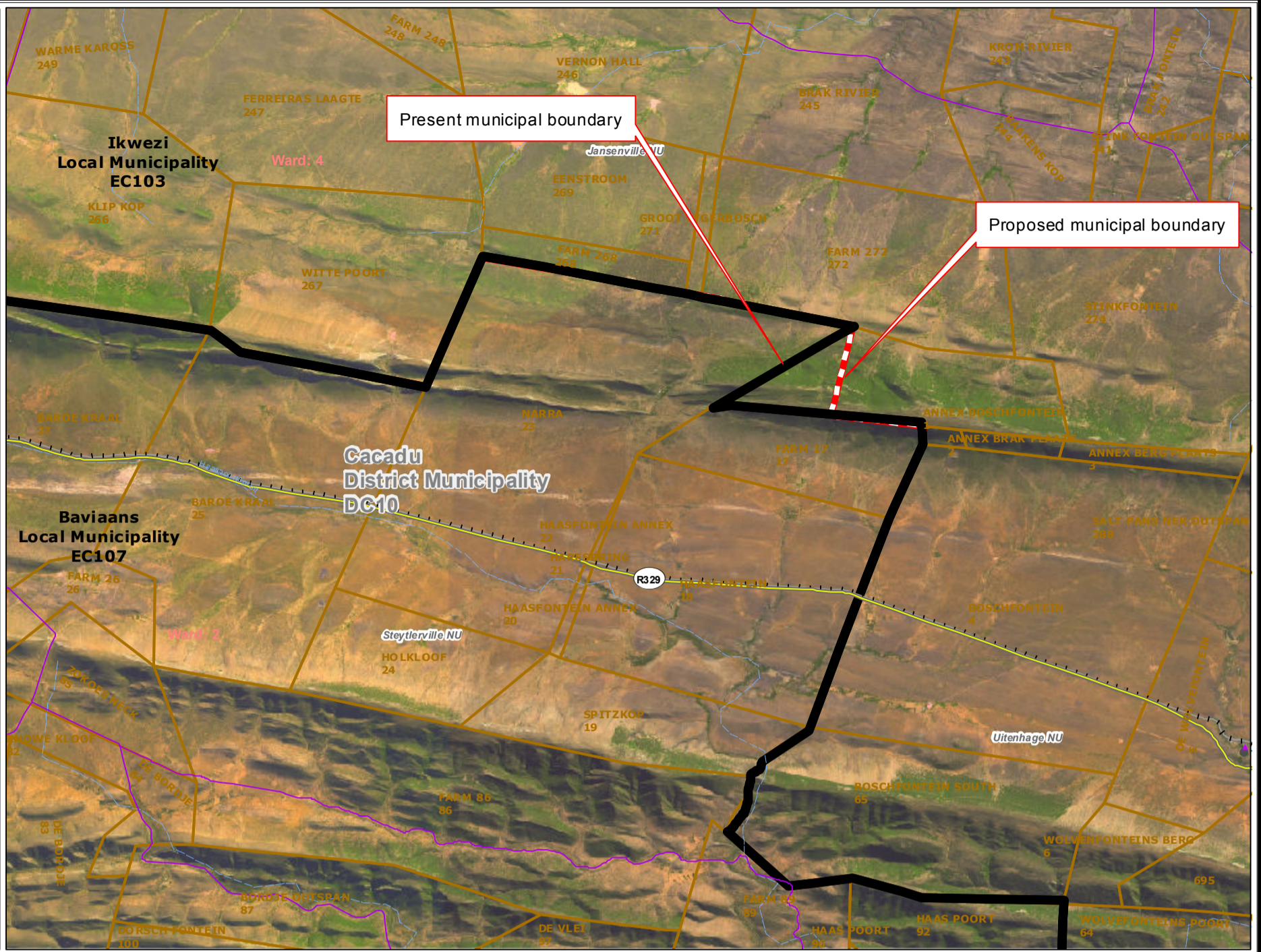


**Redetermination of municipal boundaries**

MAP NUMBER  
**DEM2470**

DATE  
**November 2012**

- Legend**
- District Municipalities
  - Local / Metro Municipalities
  - Proposed boundary change
  - Traditional Council Areas
  - Wards
  - Sub Place
  - Parent Farms
  - Dams
  - National Roads
  - Main Roads
  - Secondary Roads
  - Streets
  - Railways
  - Rivers
  - Towns
  - Schools
  - Health Facilities
  - Police Stations
  - Airports



**SECTION 26 DESCRIPTION:**

Proposed redetermination of the municipal boundaries of Ikwezi Local Municipality (EC103) and Baviaans Local Municipality (EC107), by excluding a portion of Farm Annex Boschfontein 2, from the municipal area of Ikwezi Local Municipality (EC103), and by including it into the municipal area of Baviaans Local Municipality (EC107)



**O  
V  
E  
R  
V  
I  
E  
W  
M  
A  
P**

