

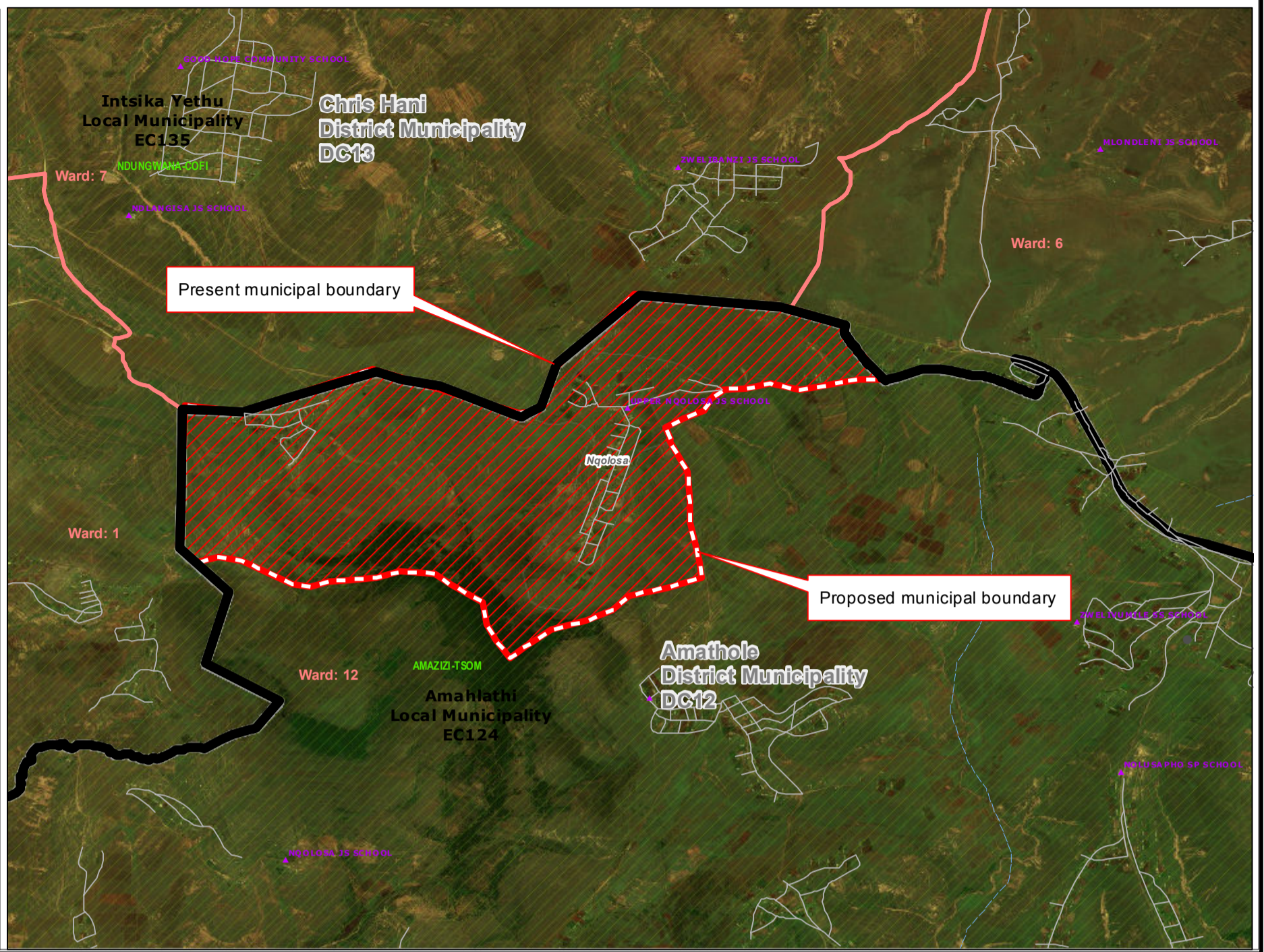


Redetermination of municipal boundaries

MAP NUMBER
DEM4085

DATE
November 2012

- Legend**
- District Municipalities
 - Local / Metro Municipalities
 - Proposed boundary change
 - Traditional Council Areas
 - Wards
 - Sub Place
 - Parent Farms
 - Dams
 - National Roads
 - Main Roads
 - Secondary Roads
 - Streets
 - Railways
 - Rivers
 - Towns
 - Schools
 - Health Facilities
 - Police Stations
 - Airports



SECTION 26 DESCRIPTION:

Proposed redetermination of the municipal boundaries of Amahlathi Local Municipality (EC124), Amathole District Municipality (DC12), Intsika Yethu Local Municipality (EC135) and Chris Hani District Municipality (DC13), by excluding Nqolosa community from the municipal areas of Amahlathi Local Municipality (EC124) and Amathole District Municipality (DC12), and by including it into the municipal areas of Intsika Yethu Local Municipality (EC135) and Chris Hani District Municipality (DC13).



O
V
E
R
V
I
E
W
M
A
P

