

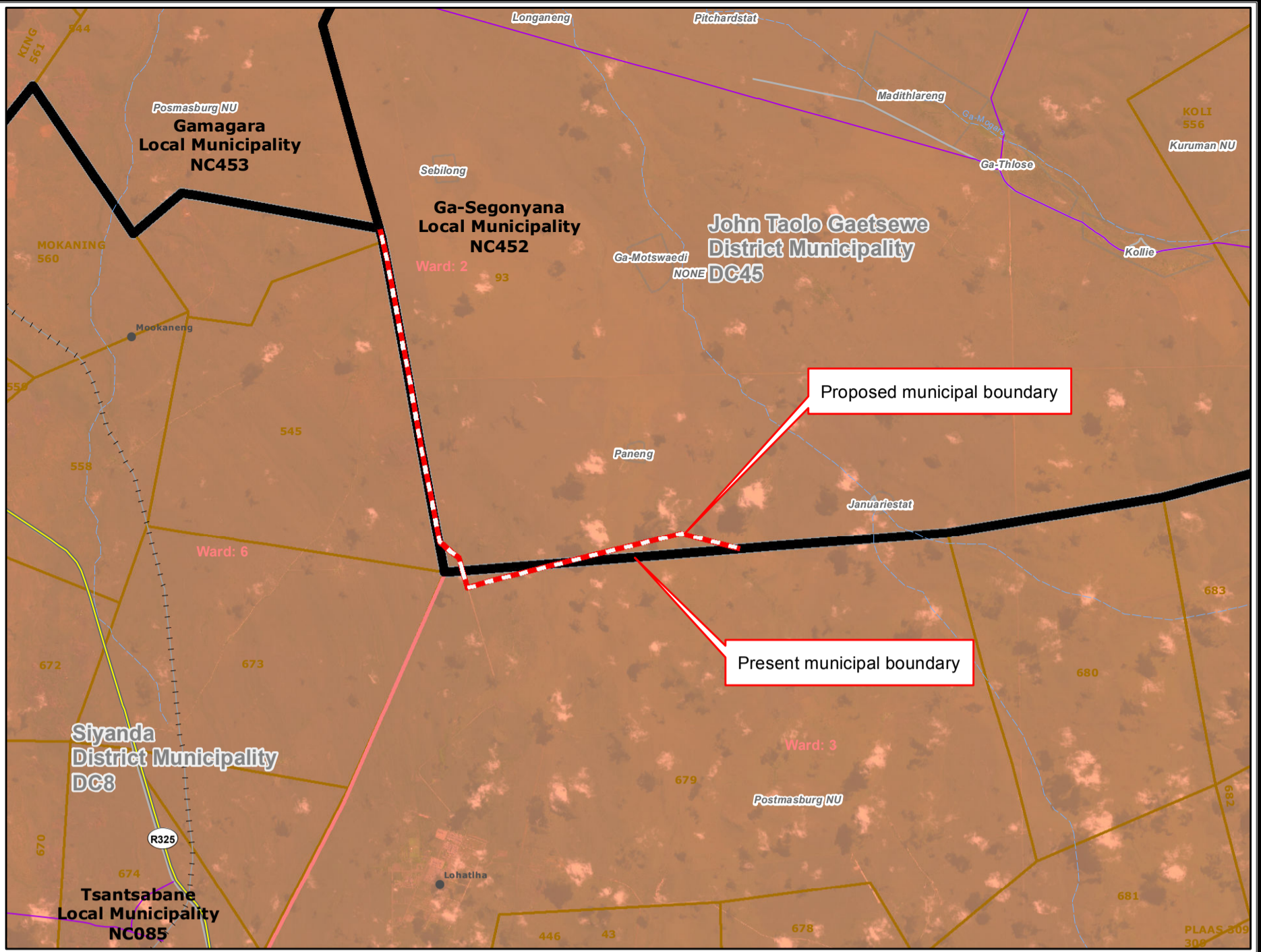


**Redetermination of municipal boundaries**

MAP NUMBER  
**DEM2301**

DATE  
**February 2012**

- Legend**
- District Municipalities
  - Local / Metro Municipalities
  - Proposed boundary change
  - Traditional Council Areas
  - Wards
  - SubPlace
  - Parent Farms
  - Dams
  - National Roads
  - Main Roads
  - Secondary Roads
  - Streets
  - Railways
  - Rivers
  - Towns
  - Schools
  - Health Facilities
  - Police Stations
  - Airports



**SECTION 26 DESCRIPTION:**

Proposed redetermination of the municipal boundaries of the Ga-Segonyana Local Municipality (NC452), John Taolo Gaetsewe District Municipality (DC45), Tsantsabane Local Municipality (NC085) and Siyanda District Municipality (DC8), by excluding a portion of Farm 93, from the municipal areas of Ga-Segonyana Local Municipality (NC452) and John Taolo Gaetsewe District Municipality (DC45) and by including them into the municipal areas of Tsantsabane Local Municipality (NC085) and Siyanda District Municipality (DC8), and by excluding a portion of Farm 679, from the municipal areas of Tsantsabane Local Municipality (NC085) and Siyanda District Municipality (DC8), and by including them into the municipal areas of Ga-Segonyana Local Municipality (NC452) and John Taolo Gaetsewe District Municipality (DC45).



**O  
V  
E  
R  
V  
I  
E  
W  
M  
A  
P**

