

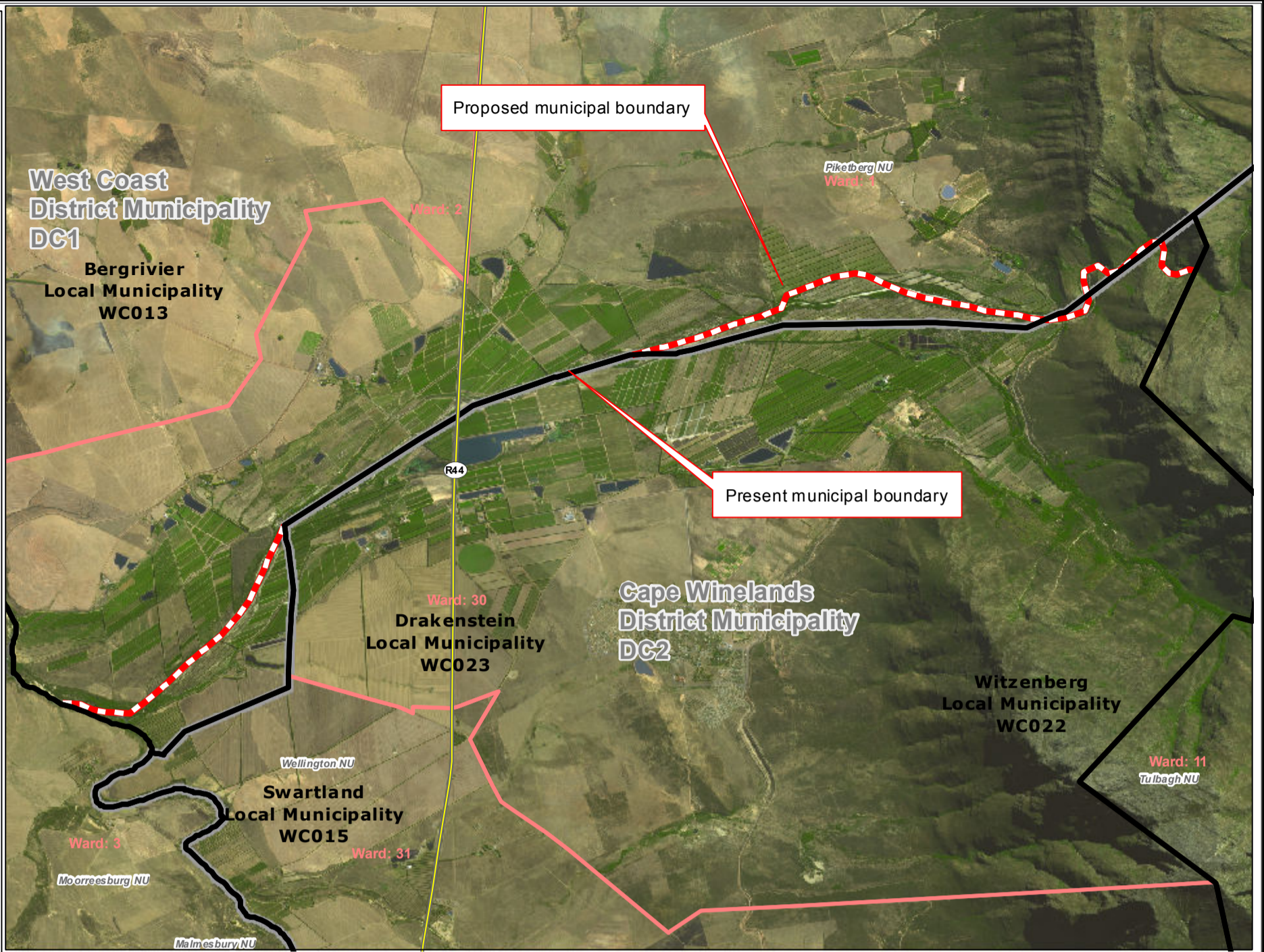


Redetermination of municipal boundaries

MAP NUMBER
DEM2003

DATE
February 2012

- Legend**
- District Municipalities
 - Local / Metro Municipalities
 - Proposed boundary change
 - Traditional Council Areas
 - Wards
 - Sub Place
 - Parent Farms
 - Dams
 - National Roads
 - Main Roads
 - Secondary Roads
 - Streets
 - Railways
 - Rivers
 - Towns
 - Schools
 - Health Facilities
 - Police Stations
 - Airports



SECTION 26 DESCRIPTION:

Proposed redetermination of the municipal boundaries of the Bergrivier Local Municipality (WC013), West Coast District Municipality (DC1), Drakenstein Local Municipality (WC023), and Cape Winelands District Municipality (DC2), by excluding portions of the farms Vier-en-Twintig Riviere 240, Neethlingsberg 231, Dasboschfontein 16, Farm 31 and Drie Das Bosch 18, from the municipal areas of Bergrivier Local Municipality (WC013), and West Coast District Municipality (DC1), and by including them into the municipal areas of Drakenstein Local Municipality (WC023), and Cape Winelands District Municipality (DC2), and by excluding portions of the Farm De Hoek Estates 35, from the municipal areas of Drakenstein Local Municipality (WC023), and Cape Winelands District Municipality (DC2), and by including them into the municipal areas of Bergrivier Local Municipality (WC013), and West Coast District Municipality (DC1)



O
V
E
R
V
I
E
W
M
A
P

