

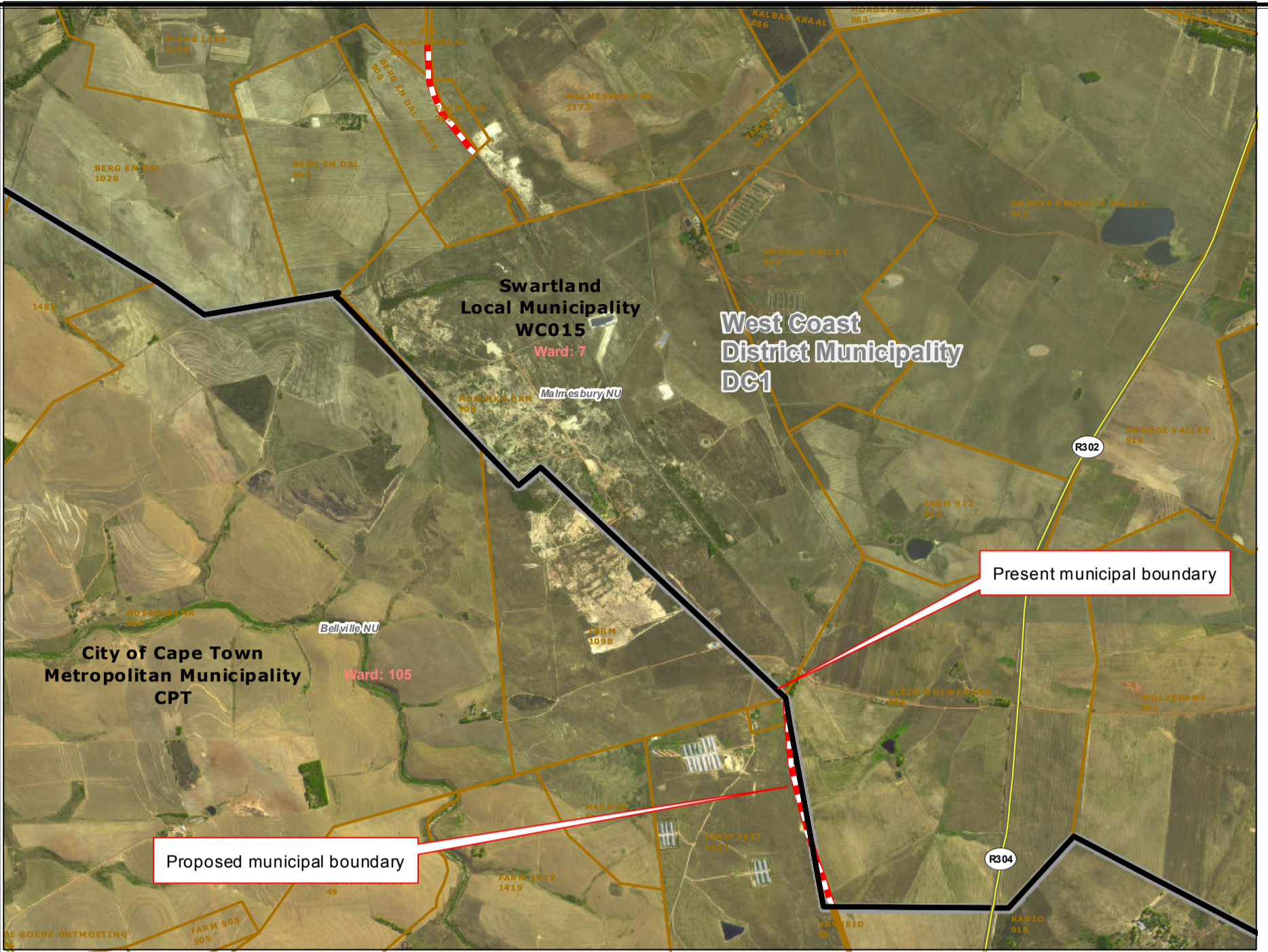


Redetermination of municipal boundaries

MAP NUMBER
DEM2005

DATE
February 2012

- Legend**
- District Municipalities
 - Local / Metro Municipalities
 - Proposed boundary change
 - Traditional Council Areas
 - Wards
 - Sub Place
 - Parent Farms
 - Dams
 - National Roads
 - Main Roads
 - Secondary Roads
 - Streets
 - Railways
 - Rivers
 - Towns
 - Schools
 - Health Facilities
 - Police Stations
 - Airports



Proposed redetermination of the municipal boundaries of the City of Cape Town Metropolitan Municipality (CPT), Swartland Local Municipality (WC015), and West Coast District Municipality (DC1),
 by excluding a portion of farm 1437 from the municipal area of the City of Cape Town Metropolitan Municipality (CPT),
 and by including it into the municipal areas of Swartland Local Municipality (WC015), and West Coast District Municipality (DC1),
 and by excluding portion of the farm Klein Wolwedans 998,
 from the municipal areas of Swartland Local Municipality (WC015),
 and West Coast District Municipality (DC1), and by including it into the City of Cape Town Metropolitan Municipality (CPT)

SECTION 26 DESCRIPTION:



O
V
E
R
B
E
R
G
D
I
S
T
R
I
C
T
M
U
N
I
C
I
P
A
L
M
A
P

