

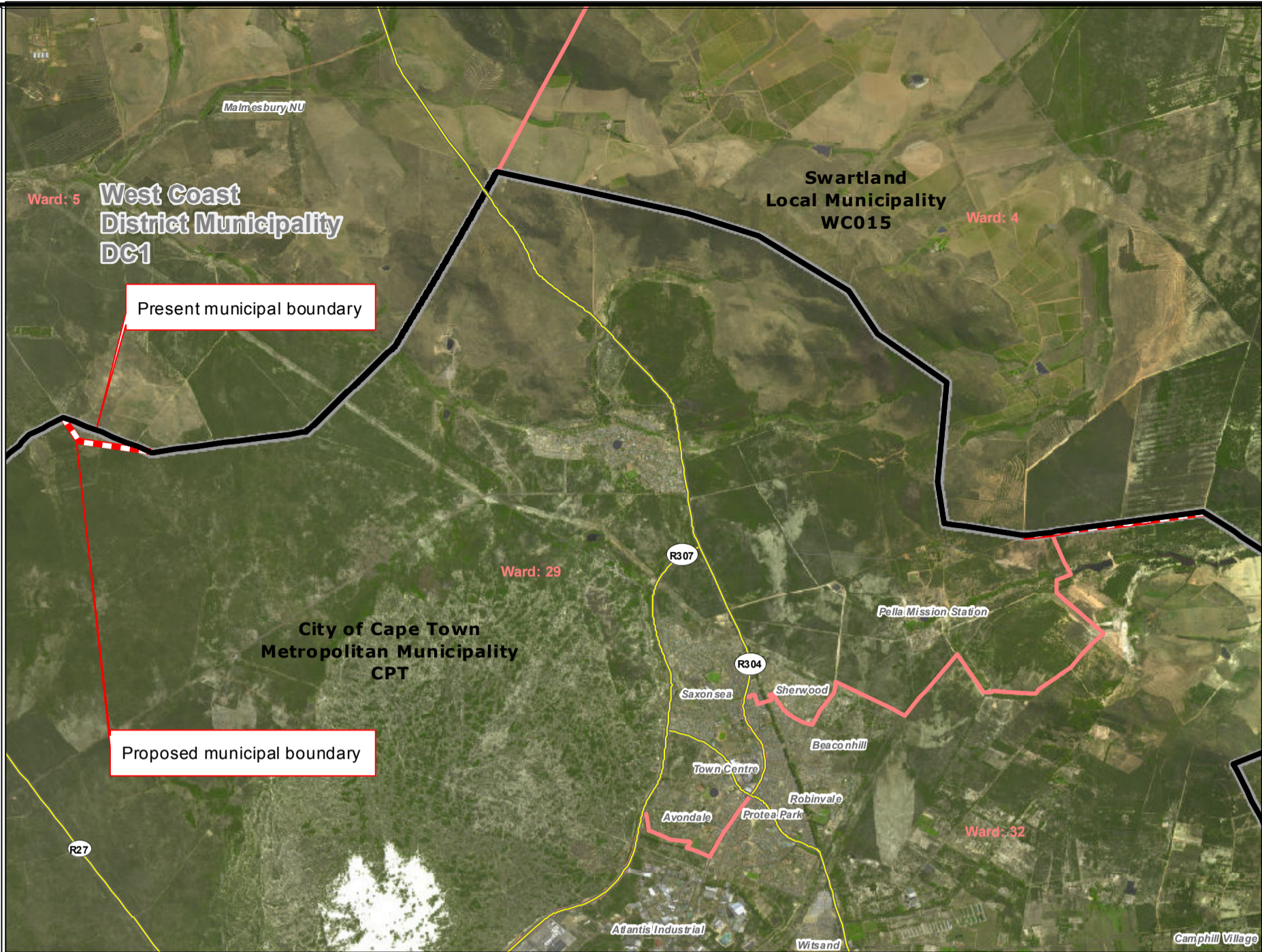


### Redetermination of municipal boundaries

MAP NUMBER  
**DEM2006**

DATE  
**February 2012**

- Legend**
- District Municipalities
  - Local / Metro Municipalities
  - Proposed boundary change
  - Traditional Council Areas
  - Wards
  - Sub Place
  - Parent Farms
  - Dams
  - National Roads
  - Main Roads
  - Secondary Roads
  - Streets
  - Railways
  - Rivers
  - Towns
  - Schools
  - Health Facilities
  - Police Stations
  - Airports



### SECTION 26 DESCRIPTION:

Proposed redetermination of the municipal boundaries of the City of Cape Town Metropolitan Municipality (CPT), Swartland Local Municipality (WC015), and West Coast District Municipality (DC1), by excluding a portion of Farm 15, portions of the farm Cruywagenskraal 977 and Farm 978, from the municipal area of City of Cape Town Metropolitan Municipality (CPT), and by including them into the municipal areas of Swartland Local Municipality (WC015), and West Coast District Municipality (DC1)



O  
V  
E  
R  
B  
E  
R  
G  
D  
I  
S  
T  
R  
I  
C  
T  
M  
U  
N  
I  
C  
I  
P  
A  
L  
M  
A  
P

