

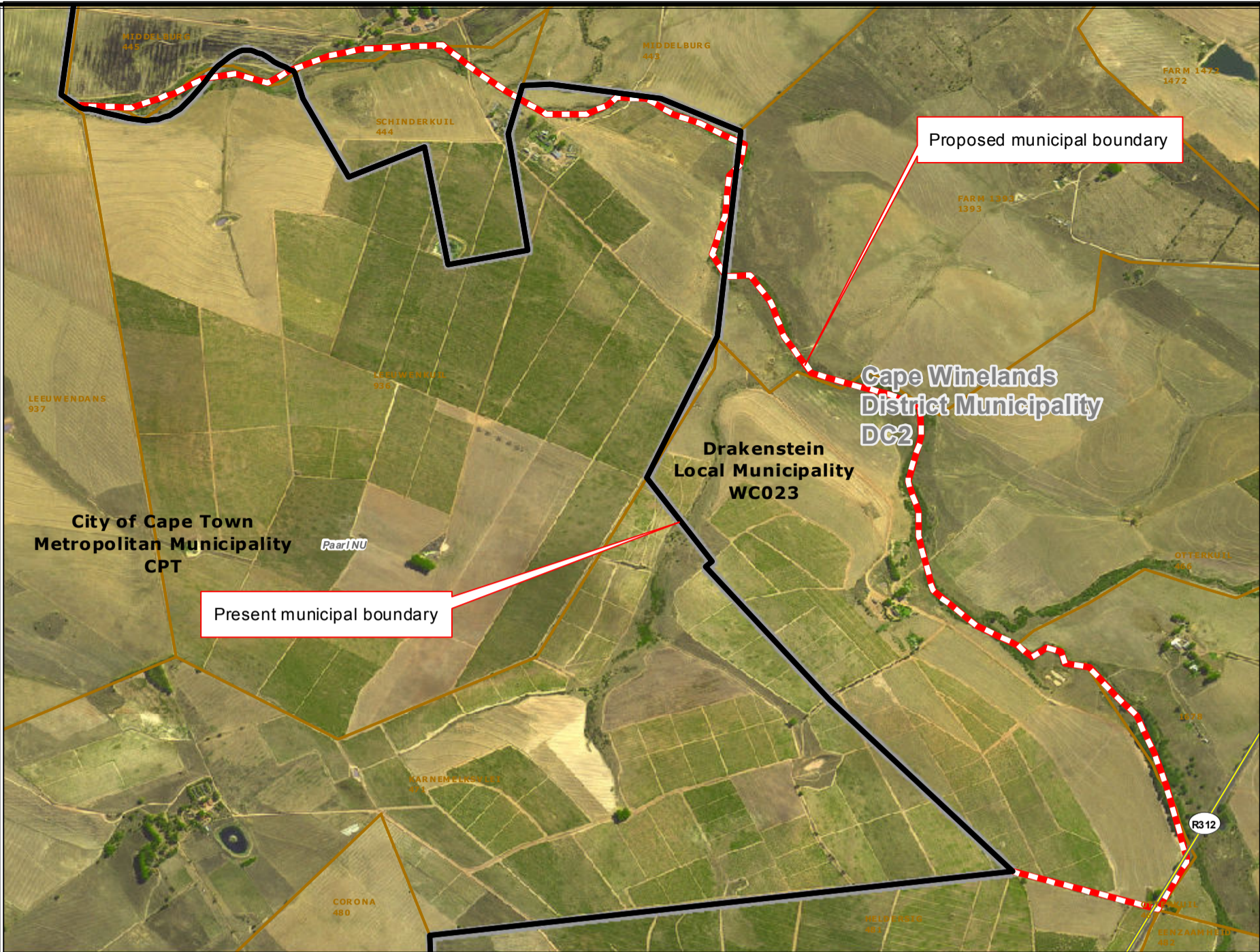


# Redetermination of municipal boundaries

MAP NUMBER  
**DEM2010**

DATE  
**February 2012**

- Legend**
- District Municipalities
  - Local / Metro Municipalities
  - Proposed boundary change
  - Traditional Council Areas
  - Wards
  - Sub Place
  - Parent Farms
  - Dams
  - National Roads
  - Main Roads
  - Secondary Roads
  - Streets
  - Railways
  - Rivers
  - Towns
  - Schools
  - Health Facilities
  - Police Stations
  - Airports



## SECTION 26 DESCRIPTION:

Proposed redetermination of the municipal boundaries of the Drakenstein Local Municipality (WC023), Cape Winelands District Municipality (DC2), City of Cape Town Metropolitan Municipality (CPT), by excluding portions of the farms Middelburg 445, Schinderkuil 444, Farm 1393, Otterkuil 466, from the municipal areas of Drakenstein Local Municipality (WC023), Cape Winelands District Municipality (DC2), by including them into the municipal area of the City of Cape Town Metropolitan Municipality (CPT), by excluding portions of the farms Middelburg 445 Leeuwenkuil 936, from the municipal area of the City of Cape Town Metropolitan Municipality (CPT), by including them into the municipal areas of Drakenstein Local Municipality (WC023), Cape Winelands District Municipality (DC2)



O  
V  
E  
R  
B  
E  
I  
E  
W  
M  
A  
P

