

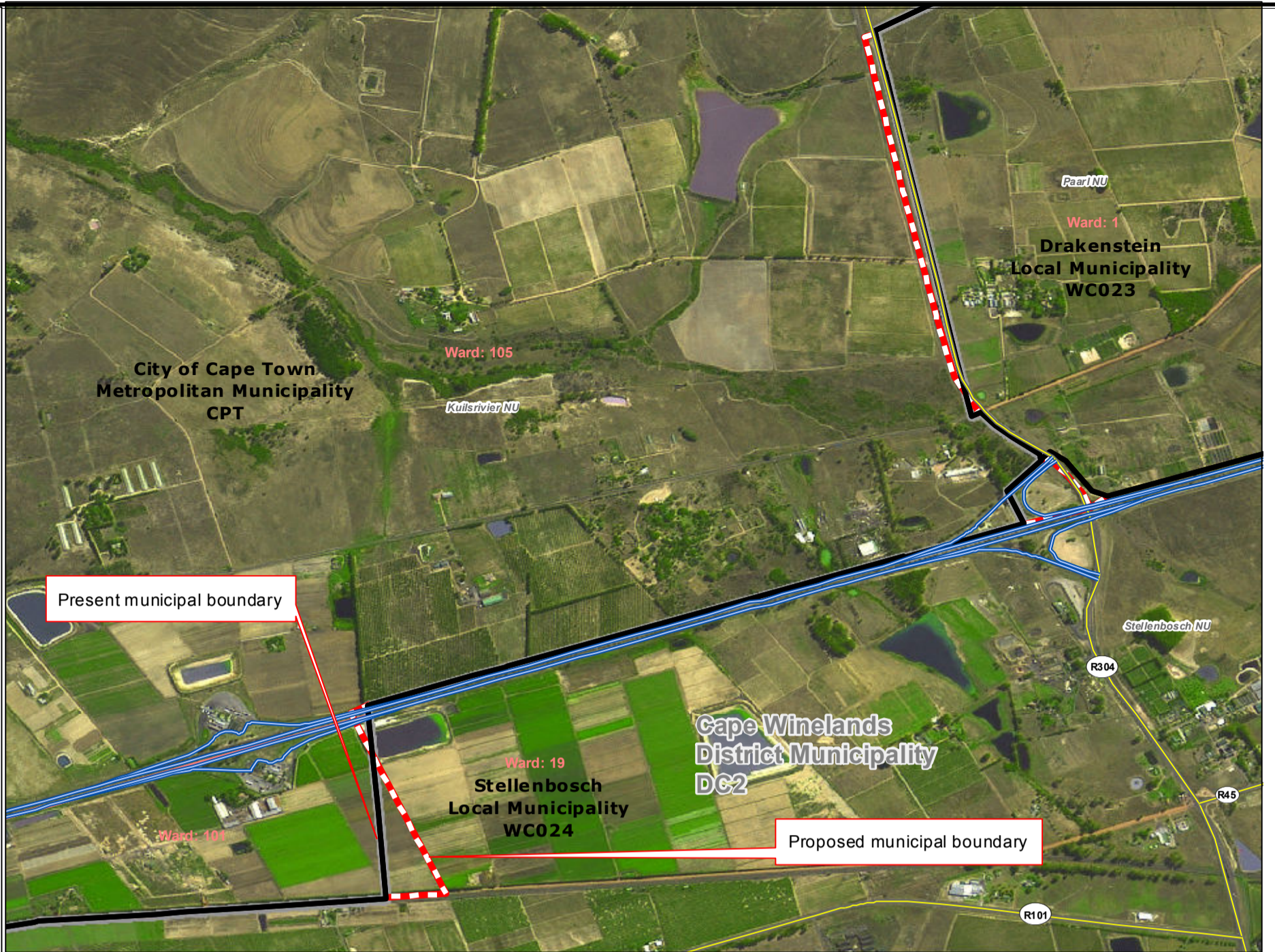


Redetermination of municipal boundaries

MAP NUMBER
DEM2011

DATE
February 2012

- Legend**
- District Municipalities
 - Local / Metro Municipalities
 - Proposed boundary change
 - Traditional Council Areas
 - Wards
 - Sub Place
 - Parent Farms
 - Dams
 - National Roads
 - Main Roads
 - Secondary Roads
 - Streets
 - Railways
 - Rivers
 - Towns
 - Schools
 - Health Facilities
 - Police Stations
 - Airports



SECTION 26 DESCRIPTION:

Proposed redetermination of the municipal boundaries of the City of Cape Town Metropolitan Municipality (CPT), Stellenbosch Local Municipality (WC024), Drakenstein Local Municipality (WC023), and Cape Winelands District Municipality (DC2), by excluding a portion of Farm 728, from the municipal area of the City of Cape Town Metropolitan Municipality (CPT), and by including it into the municipal areas of Stellenbosch Local Municipality (WC024), and Cape Winelands District Municipality (DC2), and by excluding a portion of Farm 1369, Matjeskui 733 Joostenbergsvlakte 727, from the municipal area of Cape Town Metropolitan Municipality (CPT), and by including them into the municipal areas of Drakenstein Local Municipality (WC023), and Cape Winelands District Municipality (DC2), and by excluding a portion of Lourensford Annex 730, from the municipal area of Stellenbosch Local Municipality (WC024), and Cape Winelands District Municipality (DC2), and by including it into the municipal area of City of Cape Town Metropolitan Municipality (CPT), and by excluding a portion of Weltevreden 719, from the municipal area of Drakenstein Local Municipality (WC023), and Cape Winelands District Municipality (DC2), and by including it into the municipal area of City of Cape Town Metropolitan Municipality (CPT)



O
V
E
R
B
E
R
G
D
I
S
T
R
I
C
T
M
U
N
I
C
I
P
A
L
M
A
P

