

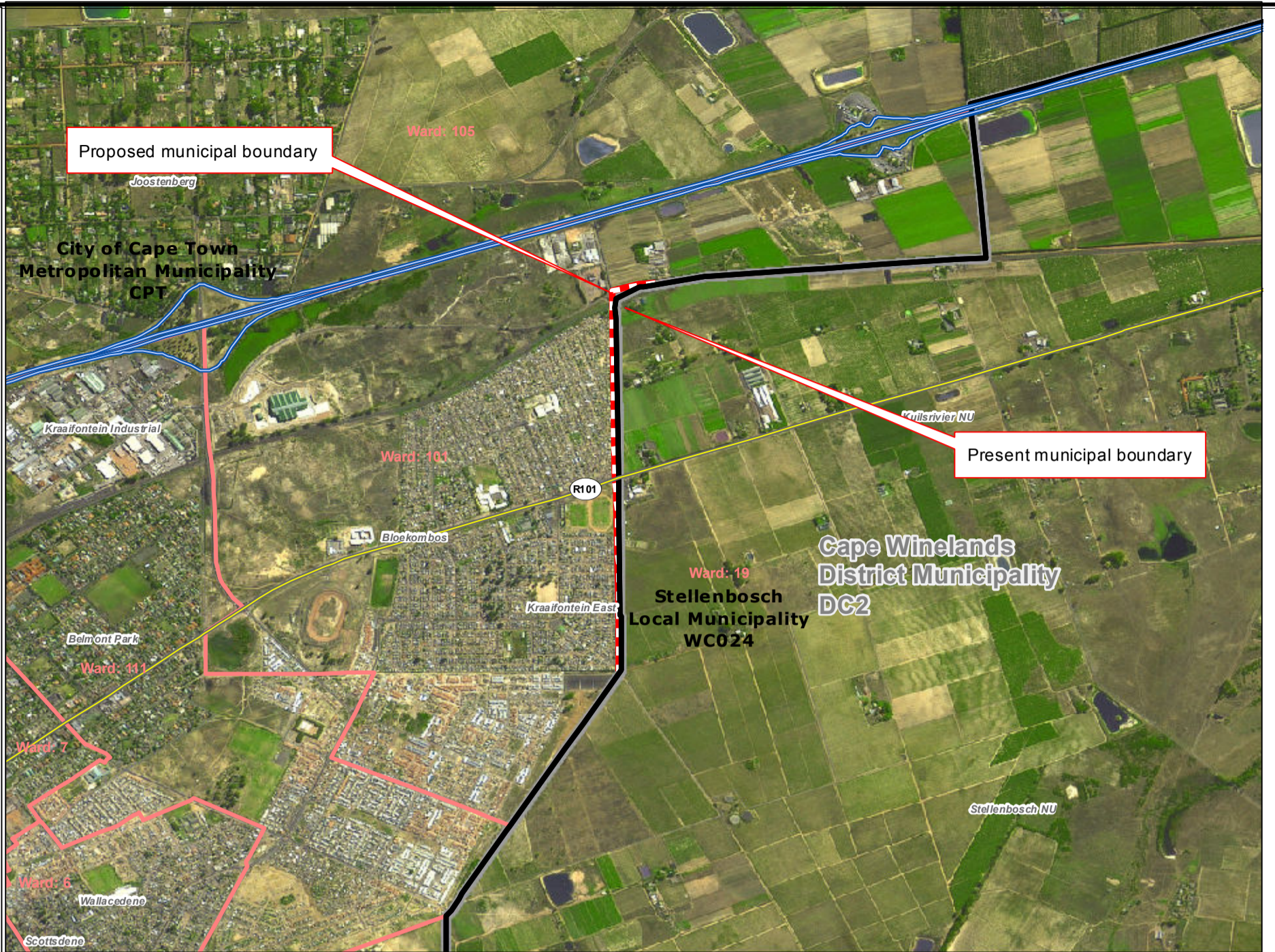


**Redetermination
of
municipal
boundaries**

MAP NUMBER
DEM2016

DATE
February 2012

- Legend**
- District Municipalities
 - Local / Metro Municipalities
 - Proposed boundary change
 - Traditional Council Areas
 - Wards
 - Sub Place
 - Parent Farms
 - Dams
 - National Roads
 - Main Roads
 - Secondary Roads
 - Streets
 - Railways
 - Rivers
 - Towns
 - Schools
 - Health Facilities
 - Police Stations
 - Airports



**SECTION 26
DESCRIPTION:**

Proposed redetermination of the municipal boundaries of the City of Cape Town Metropolitan Municipality (CPT), Stellenbosch Local Municipality (WC024), and Cape Winelands District Municipality (DC2), by excluding the area east of Bloekombos Kraaifontein East, from the municipal area of the City of Cape Town Metropolitan Municipality (CPT), and by including it into the municipal area of Stellenbosch Local Municipality (WC024), and Cape Winelands District Municipality (DC2)



**O
V
E
R
V
I
E
W
M
A
P**

