

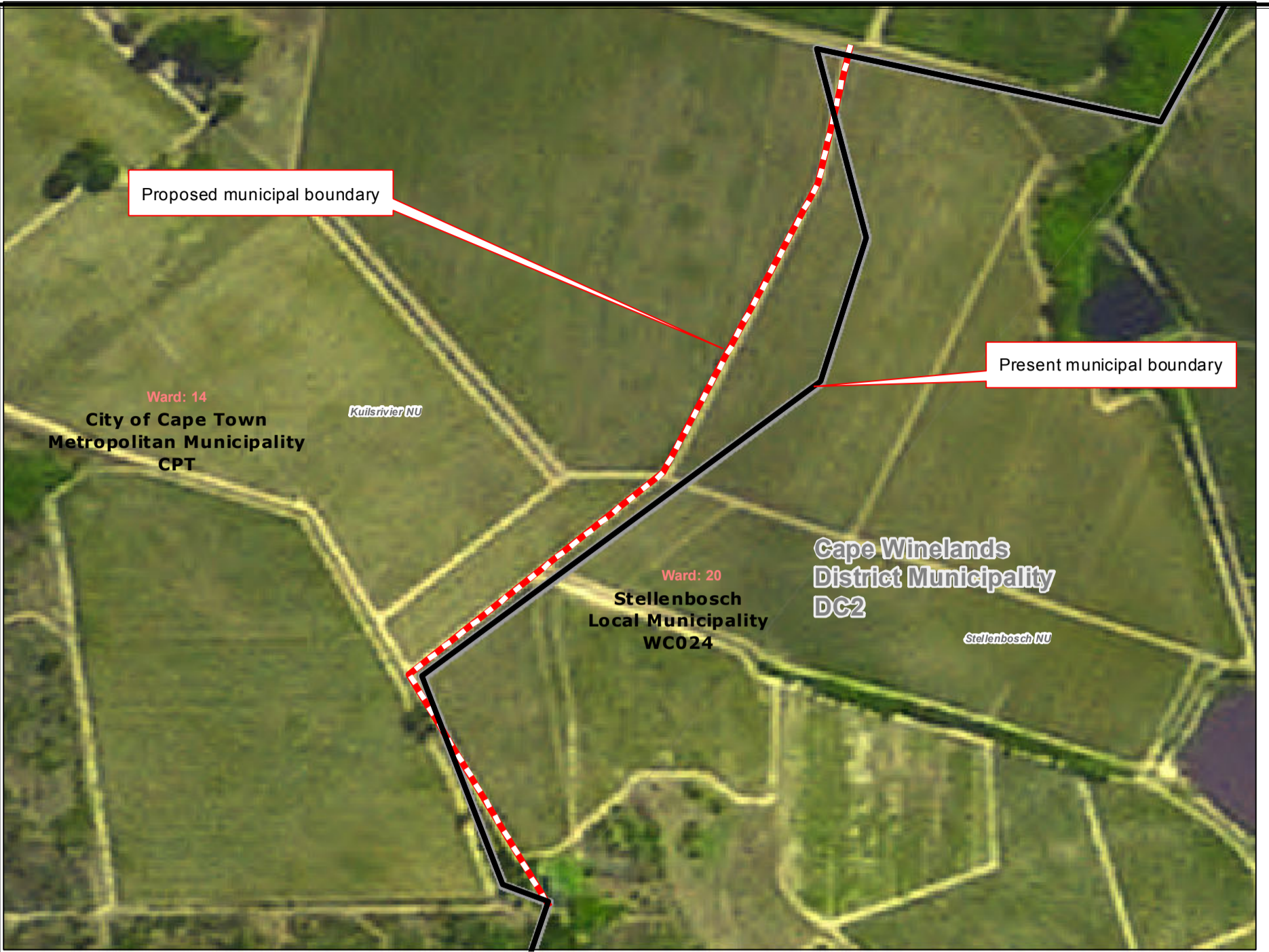


**Redetermination  
of  
municipal  
boundaries**

MAP NUMBER  
**DEM2018**

DATE  
**February 2012**

- Legend**
- District Municipalities
  - Local / Metro Municipalities
  - Proposed boundary change
  - Traditional Council Areas
  - Wards
  - Sub Place
  - Parent Farms
  - Dams
  - National Roads
  - Main Roads
  - Secondary Roads
  - Streets
  - Railways
  - Rivers
  - Towns
  - Schools
  - Health Facilities
  - Police Stations
  - Airports



**SECTION 26  
DESCRIPTION:**

Proposed redetermination of the municipal boundaries of the City of Cape Town Metropolitan Municipality (CPT), Stellenbosch Local Municipality (WC024), and Cape Winelands District Municipality (DC2), by excluding a portion of the farm Annex Langverwacht 245, from the municipal area of the City of Cape Town Metropolitan Municipality (CPT), and by including it into the municipal area of Stellenbosch Local Municipality (WC024), and Cape Winelands District Municipality (DC2)



O  
V  
E  
R  
V  
I  
E  
W  
M  
A  
P

