

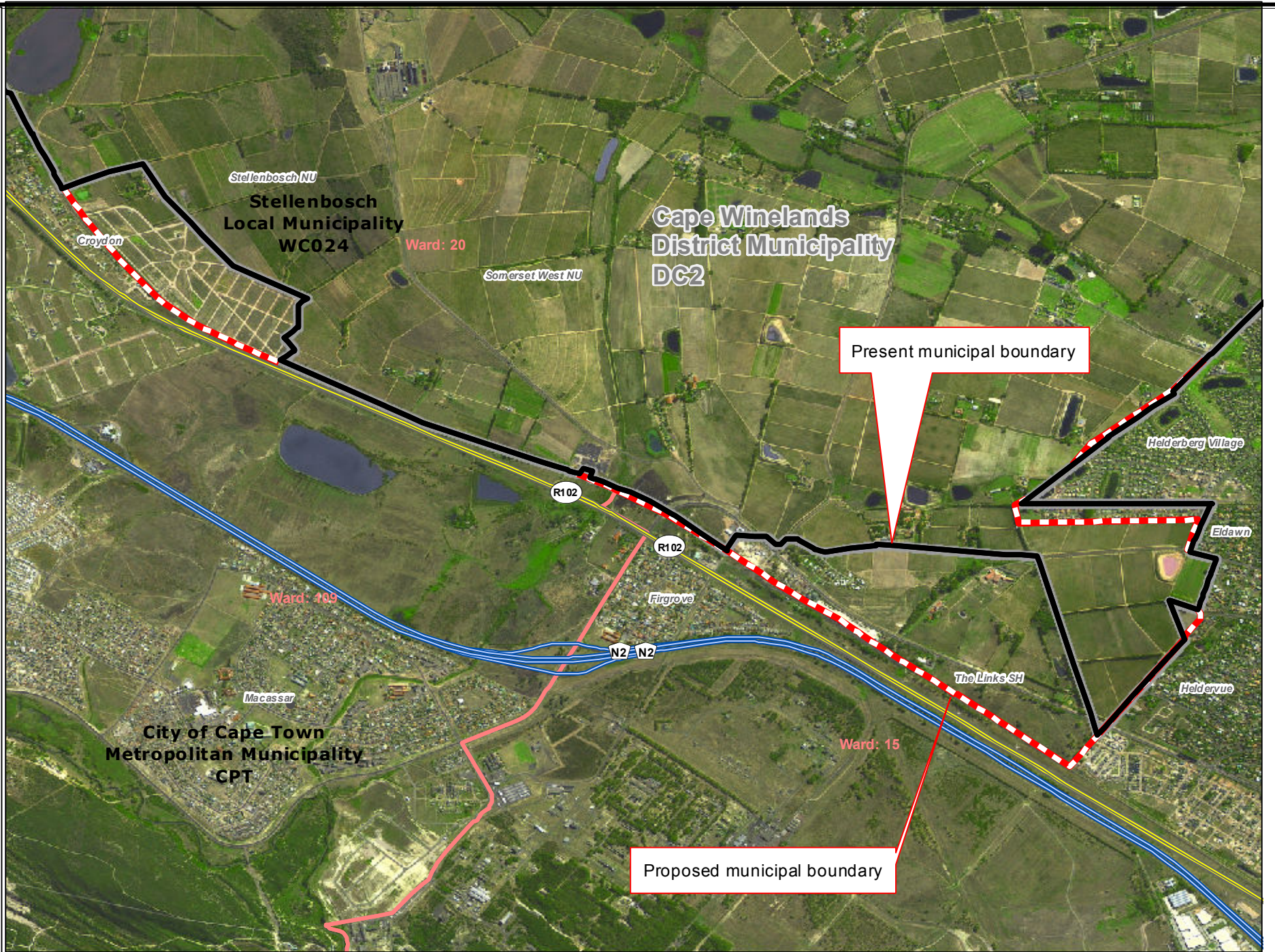


Redetermination of municipal boundaries

MAP NUMBER
DEM2020

DATE
February 2012

- Legend**
- District Municipalities
 - Local / Metro Municipalities
 - Proposed boundary change
 - Traditional Council Areas
 - Wards
 - Sub Place
 - Parent Farms
 - Dams
 - National Roads
 - Main Roads
 - Secondary Roads
 - Streets
 - Railways
 - Rivers
 - Towns
 - Schools
 - Health Facilities
 - Police Stations
 - Airports



SECTION 26 DESCRIPTION:

Proposed redetermination of the municipal boundaries of the City of Cape Town Metropolitan Municipality (CPT), Stellenbosch Local Municipality (WC024), and Cape Winelands District Municipality (DC2), by excluding a portion of Croydon, portions of the farms Zandvliet 664, Farm 785, Firrail 782, Vaalfontein Wes 780, Bonny Brack 779, Glen No 777 779, Vaalfontein Outspan 781 and Farm 1088, from the municipal area of the City of Cape Town Metropolitan Municipality (CPT), and by including them into the municipal area of Stellenbosch Local Municipality (WC024), and Cape Winelands District Municipality (DC2), and by excluding a portion of La Montagne, from the municipal area of Stellenbosch Local Municipality (WC024), and Cape Winelands District Municipality (DC2), and by including it into the City of Cape Town Metropolitan Municipality (CPT)



O
V
E
R
B
E
R
G
D
I
S
T
R
I
C
T
M
U
N
I
C
I
P
A
L
M
A
P

