

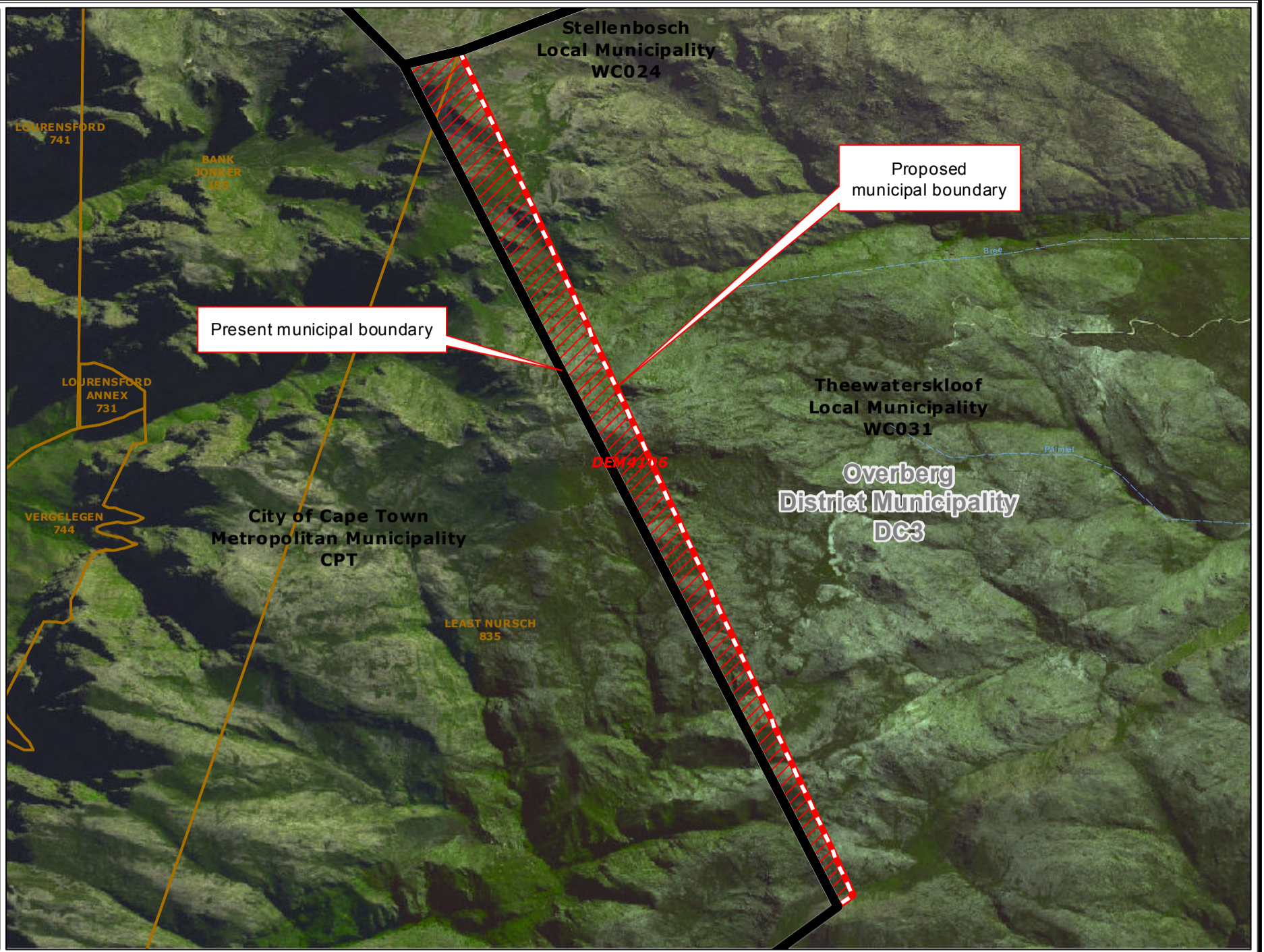


**Redetermination
of
municipal
boundaries**

MAP NUMBER
DEM4106

DATE
February 2012

- Legend**
- District Municipalities
 - Local / Metro Municipalities
 - Proposed boundary change
 - Traditional Council Areas
 - Wards
 - Sub Place
 - Parent Farms
 - Dams
 - National Roads
 - Main Roads
 - Secondary Roads
 - Streets
 - Railways
 - Rivers
 - Towns
 - Schools
 - Health Facilities
 - Police Stations
 - Airports

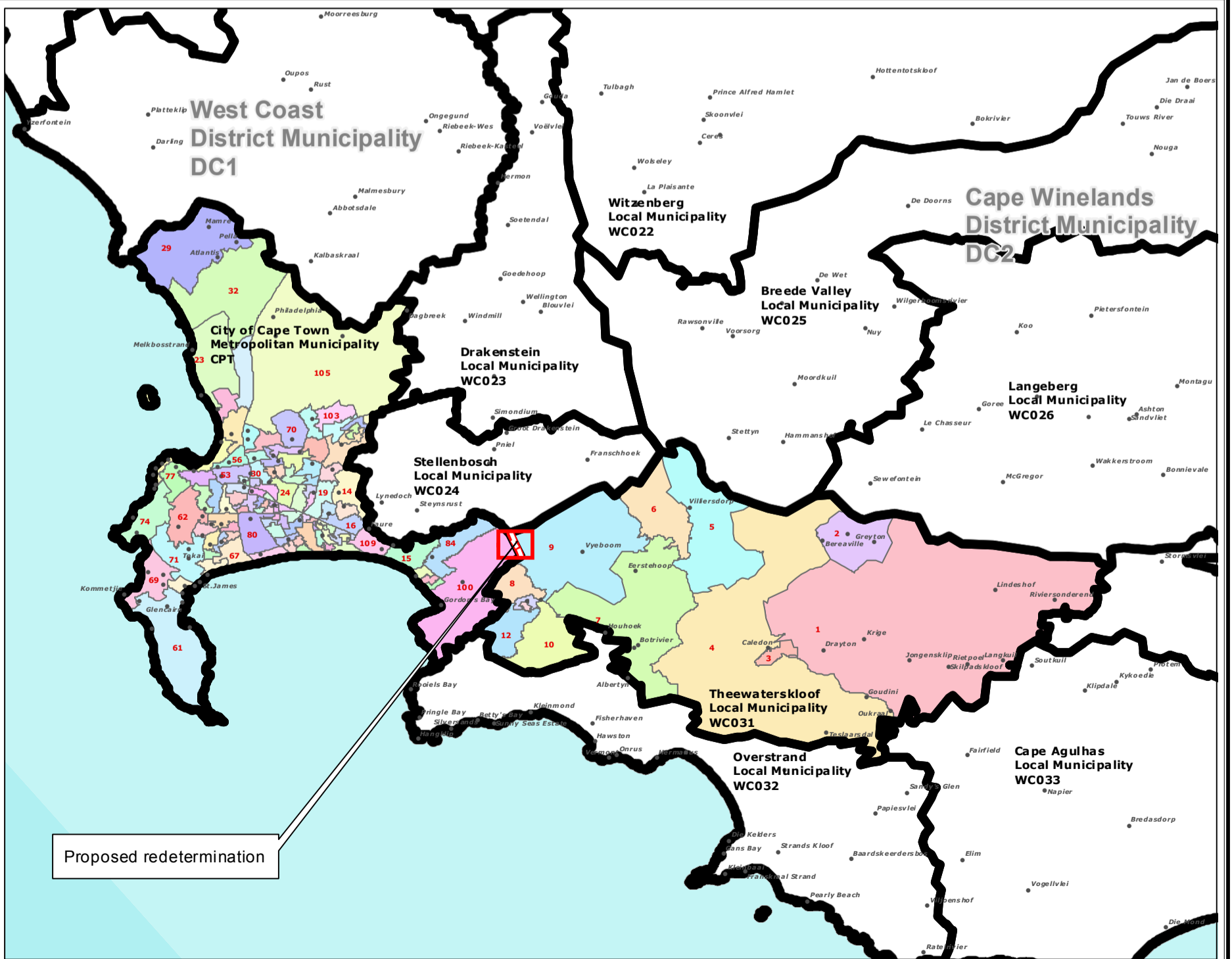


**PRE SECTION 26
DESCRIPTION:**

Proposed redetermination of the municipal boundaries of Theewaterskloof Local Municipality (WC031), Overberg District Municipality (DC3), City of Cape Town Metropolitan Municipality (CPT), by excluding portions of the farm Least Nurch 835 from the municipal areas of Theewaterskloof Local Municipality (WC031), Overberg District Municipality (DC3), by including them into the municipal area of the City of Cape Town Metropolitan Municipality (CPT)



**O
V
E
R
B
E
R
G
D
I
S
T
R
I
C
T
M
U
N
I
C
I
P
A
L
M
A
P**



Proposed redetermination