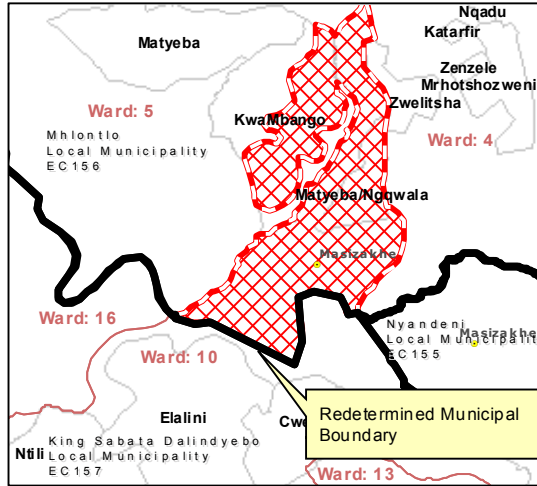




MAP NUMBER  
**DEM2519**

DATE  
**August 2013**

**DETAIL OF REDETERMINATION**



In terms of Section 21 of the Local Government: Municipal Demarcation Act 27 of 1998 the Municipal Demarcation Board has re-determined the municipal boundaries of King Sabata Dalindyebo Local Municipality (EC157) and Mhlontlo Local Municipality (EC156), by excluding the village of Matyeba/Ngqwala from the municipal area of King Sabata Dalindyebo Local Municipality (EC157), and by including them into the municipal area of Mhlontlo Local Municipality (EC156).

**Legend**

- Main Place
- DEM
- Local/Metro Municipalities
- District Municipalities
- Wards
- Sub Place
- National Roads
- Main Roads
- Secondary Roads
- Rivers

Additional info relating to this map can be obtained from the Municipal Demarcation Board:

Tel: (012) 342 2481  
Fax: (012) 342 2480

E-mail:  
[info@demarcation.org.za](mailto:info@demarcation.org.za)

Internet download:  
[www.demarcation.org.za](http://www.demarcation.org.za)

