



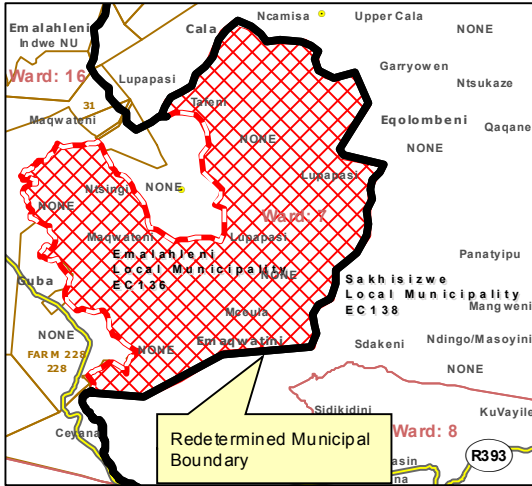
MAP NUMBER

DEM4181

DATE

August 2013

DETAIL OF REDETERMINATION



In terms of Section 21 of the Local Government: Municipal Demarcation Act 27 of 1998 the Municipal Demarcation Board has re-determined the municipal boundaries of Sakhisizwe Local Municipality (EC138), and Emalahleni Local Municipality (EC136), by excluding Lupapasi Village from the municipal area of Sakhisizwe Local Municipality (EC138), and by including it into the municipal area of Emalahleni Local Municipality (EC136).

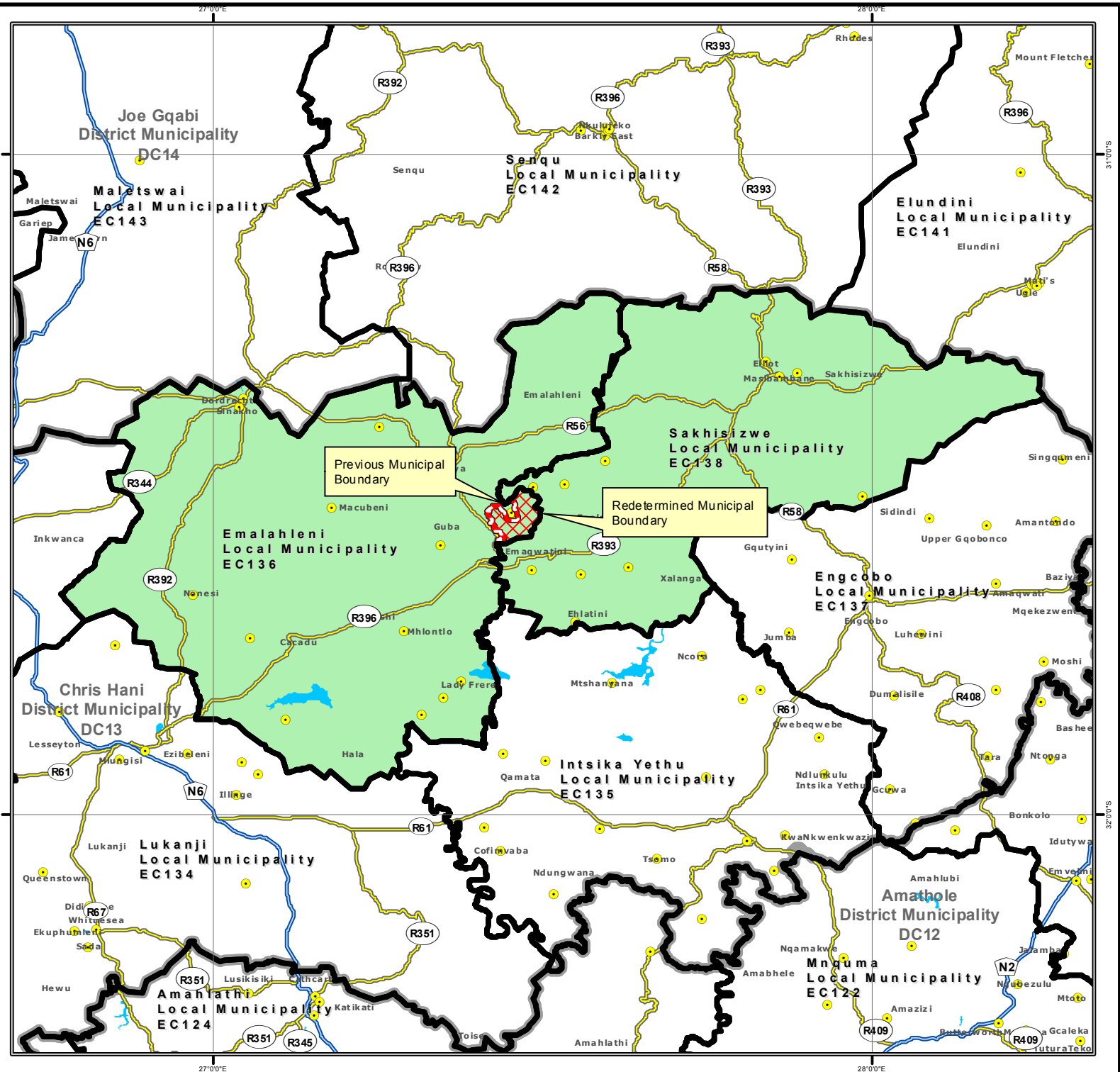
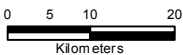
- Legend**
- Main Place
 - DEM
 - Local/Metro Municipalities
 - District Municipalities
 - Wards
 - Sub Place
 - National Roads
 - Main Roads
 - Secondary Roads
 - Rivers

Additional info relating to this map can be obtained from the Municipal Demarcation Board:

Tel: (012) 342 2481
Fax: (012) 342 2480

E-mail: info@demarcation.org.za

Internet download: www.demarcation.org.za



27°00'E

28°00'E

31°00'S

32°00'S

31°00'S

32°00'S