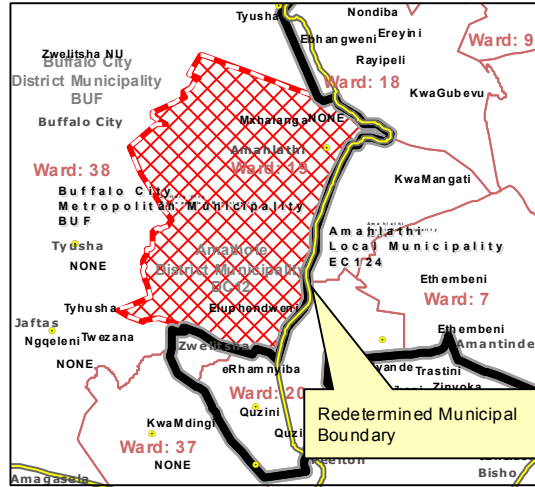




MAP NUMBER
DEM4162

DATE
August 2013

DETAIL OF REDETERMINATION



In terms of Section 21 of the Local Government: Municipal Demarcation Act 27 of 1998 the Municipal Demarcation Board has re-determined the municipal boundaries of Amahlathi Local Municipality (EC124), Amathole District Municipality (DC12) and Buffalo City Metropolitan Municipality (BUF), by excluding the areas of Mkhlanga and Cwengcwe from the municipal areas of Amahlathi Local Municipality (EC124), and Amathole District Municipality (DC12), and by including them into the municipal area of Buffalo City Metropolitan Municipality (BUF).

Legend

- Main Place
- DEM
- Local/Metro Municipalities
- District Municipalities
- Wards
- Sub Place
- National Roads
- Main Roads
- Secondary Roads
- Rivers

Additional info relating to this map can be obtained from the Municipal Demarcation Board:

Tel: (012) 342 2481
Fax: (012) 342 2480

E-mail:
info@demarcation.org.za

Internet download:
www.demarcation.org.za

