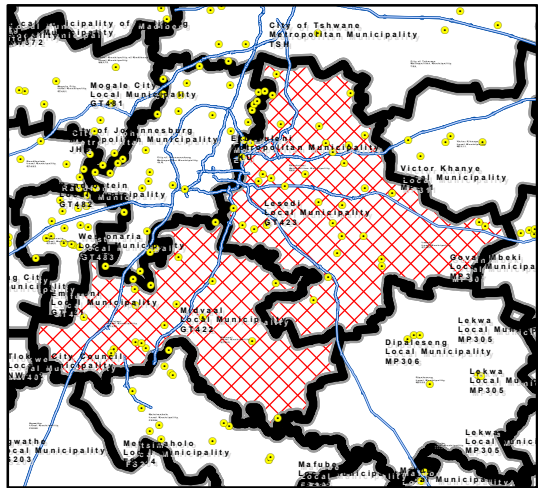




MAP NUMBER  
**DEM4059\_3**

DATE  
**August 2013**

**DETAIL OF REDETERMINATION**



In terms of Section 21 of the Local Government: Municipal Demarcation Act 27 of 1998 the Municipal Demarcation Board has re-determined the municipal boundaries of Emfuleni Local Municipality (GT421), Midvaal Local Municipality (GT422), Lesedi Local Municipality (GT423), Sedibeng District Municipality (DC42) and Ekurhuleni Metropolitan Municipality (EKU), by excluding Emfuleni Local Municipality (GT421) and Midvaal Local Municipality (GT422) from the municipal area of Sedibeng District Municipality (DC42), and by amalgamating them into a new single Category A Metropolitan Municipality, and excluding Lesedi Local Municipality (GT423) from the municipal area of Sedibeng District Municipality (DC42), and by including it into the municipal area of Ekurhuleni Metropolitan Municipality (EKU).

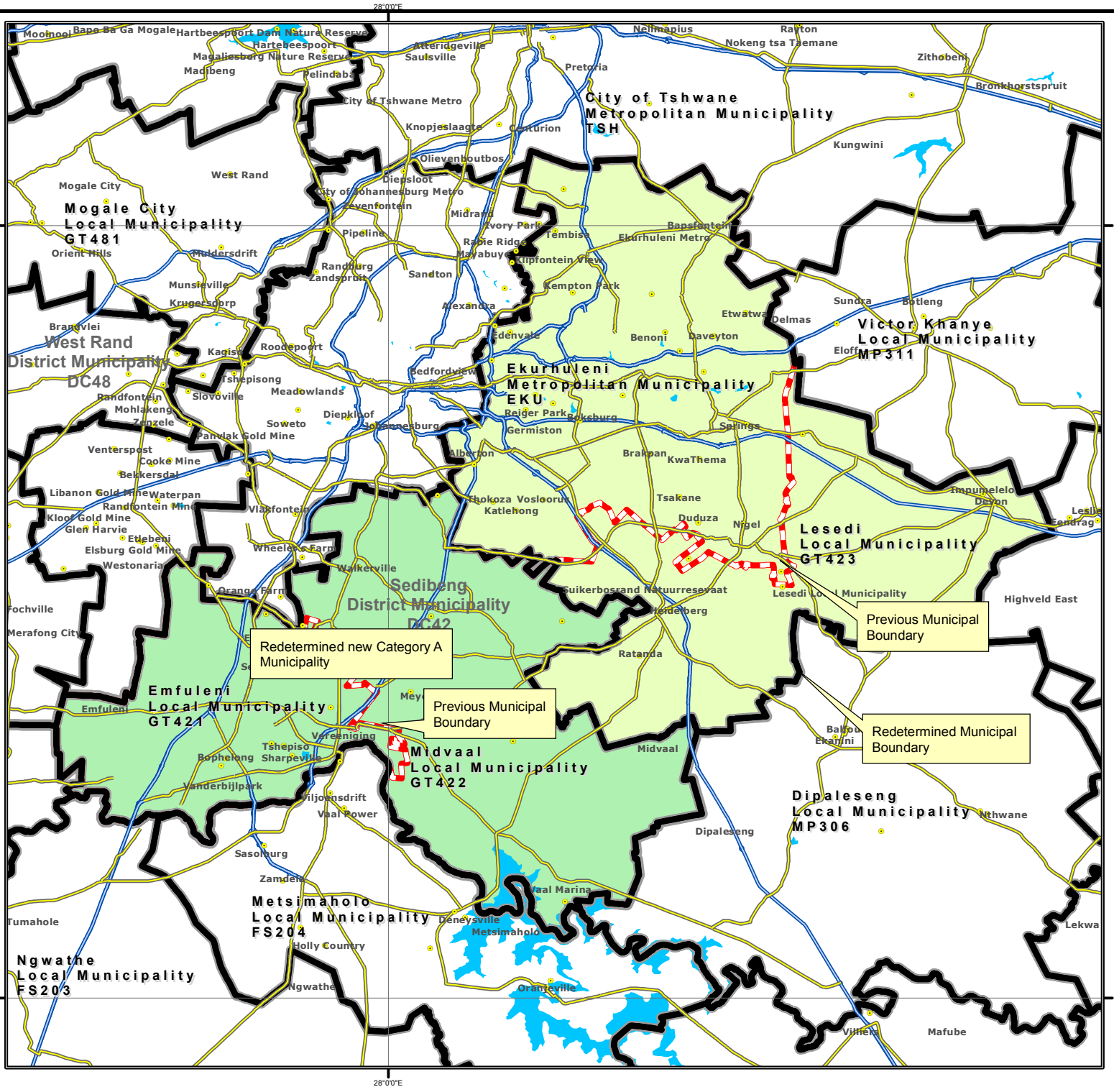
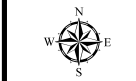
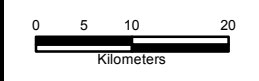
- Legend**
- Main Place
  - Re-determined Municipal Boundary
  - Local/Metro Municipalities
  - District Municipalities
  - Wards
  - Sub Place
  - National Roads
  - Main Roads
  - Secondary Roads
  - Rivers

Additional info relating to this map can be obtained from the Municipal Demarcation Board:

Tel: (012) 342 2481  
Fax: (012) 342 2480

E-mail:  
[info@demarcation.org.za](mailto:info@demarcation.org.za)

Internet download:  
[www.demarcation.org.za](http://www.demarcation.org.za)



Redetermined new Category A Municipality

Previous Municipal Boundary

Previous Municipal Boundary

Redetermined Municipal Boundary