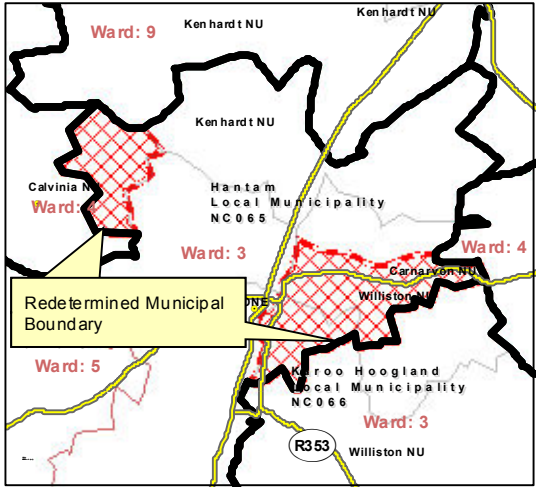




MAP NUMBER
DEM496

DATE
August 2013

DETAIL OF REDETERMINATION



In terms of Section 21 of the Local Government: Municipal Demarcation Act 27 of 1998 the Municipal Demarcation Board has re-determined the municipal boundaries of Khai-Ma Local Municipality (NC067), Karoo Hoogland Local Municipality (NC066) and Hantam Local Municipality (NC065), by excluding the farms as per attached schedule from the municipal areas of Karoo Hoogland Local Municipality (NC066) and Khai Ma Local Municipality (NC067), and by including them into the municipal area of Hantam Local Municipality (NC065).

- Legend**
- Main Place
 - DEM
 - Local/Metro Municipalities
 - District Municipalities
 - Wards
 - Sub Place
 - National Roads
 - Main Roads
 - Secondary Roads
 - Rivers

Additional info relating to this map can be obtained from the Municipal Demarcation Board:

Tel: (012) 342 2481
Fax: (012) 342 2480

E-mail:
info@demarcation.org.za

Internet download:
www.demarcation.org.za

