

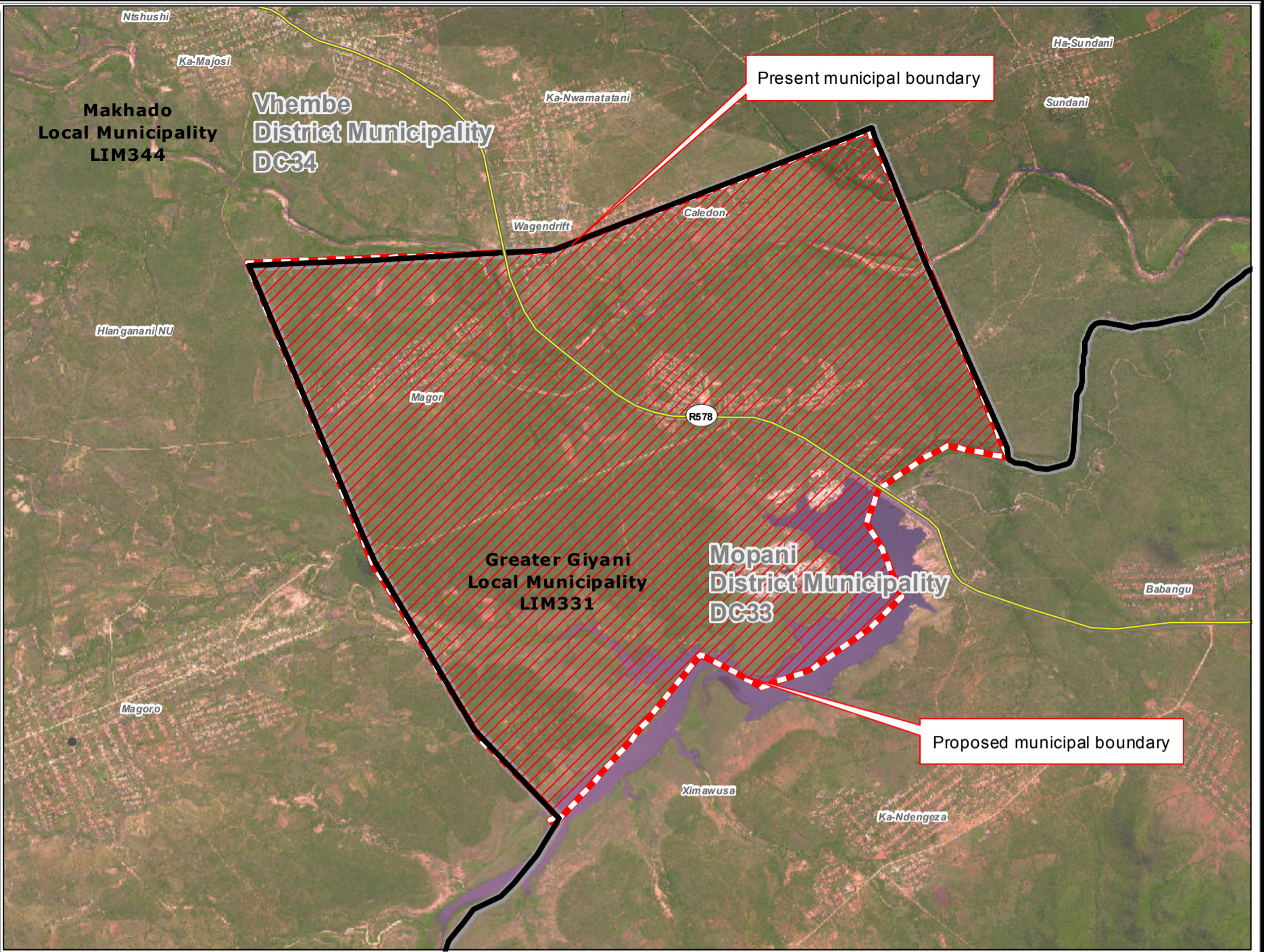


Redetermination of municipal boundaries

MAP NUMBER
DEM4365

DATE
November 2012

- Legend**
- District Municipalities
 - Local / Metro Municipalities
 - Proposed boundary change
 - Traditional Council Areas
 - Wards
 - Sub Place
 - Parent Farms
 - Dams
 - National Roads
 - Main Roads
 - Secondary Roads
 - Streets
 - Railways
 - Rivers
 - Towns
 - Schools
 - Health Facilities
 - Police Stations
 - Airports



SECTION 26 DESCRIPTION:

Proposed redetermination of the municipal boundaries of Greater Giyani Local Municipality (LIM331), Mopani District Municipality (DC33), Makhado Local Municipality (LIM344), Vhembe District Municipality (DC34), by excluding farms Sterkriver 97, Caledon 62, Magor 63 and Blinkwater 67 from the municipal areas of Greater Giyani Local Municipality (LIM331) and Mopani District Municipality (DC33) and by including them into the municipal areas of Makhado Local Municipality (LIM344) and Vhembe District Municipality (DC34).



O
V
E
R
V
I
E
W
M
A
P

