



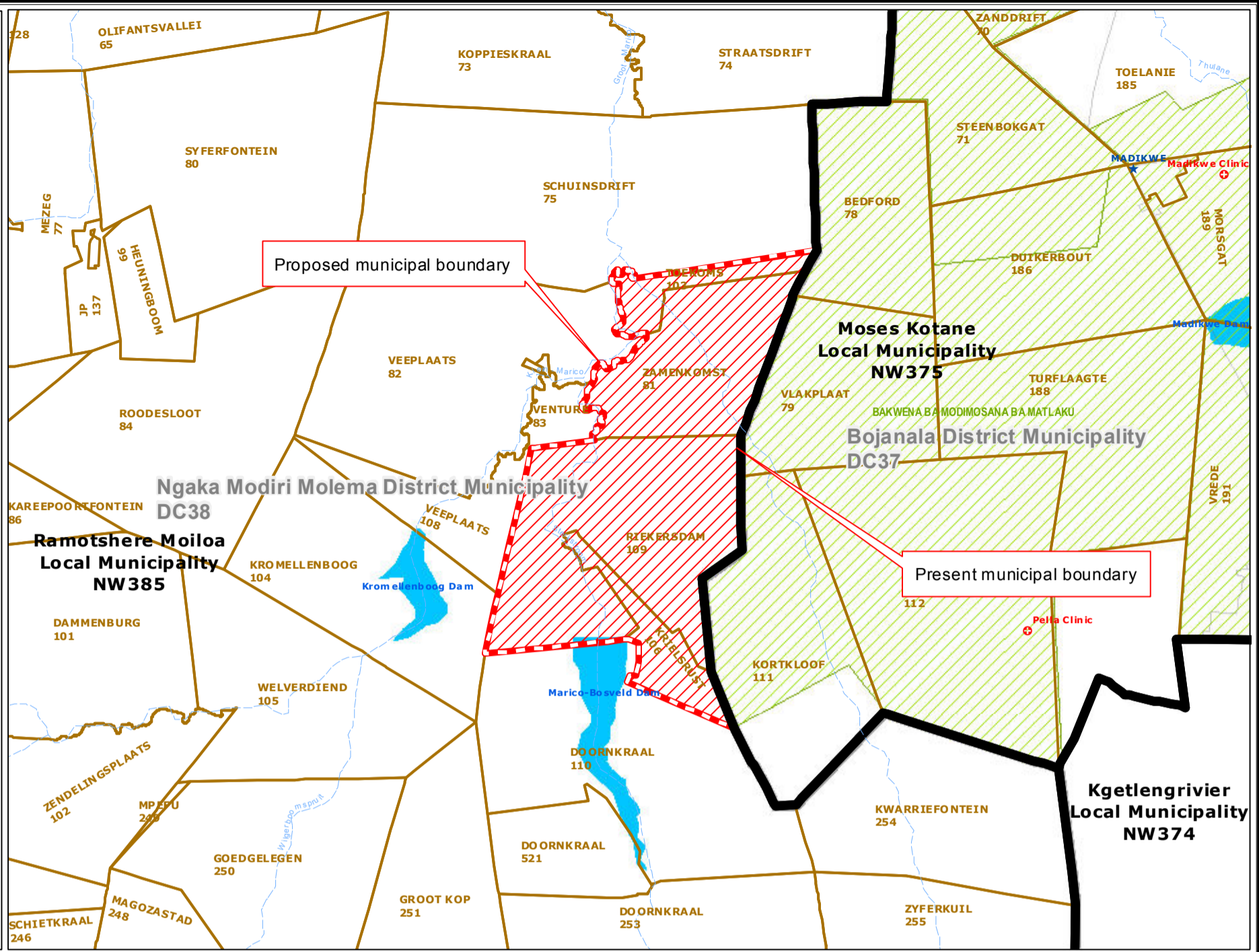
Redetermination of municipal boundaries

MAP NUMBER
DEM4061

DATE
November 2012

Legend

- District Municipalities
- Local / Metro Municipalities
- Proposed boundary change
- Traditional Council Areas
- Wards
- Sub Place
- Parent Farms
- Dams
- National Roads
- Main Roads
- Secondary Roads
- Streets
- Railways
- Rivers
- Towns
- Schools
- Health Facilities
- Police Stations
- Airports



SECTION 26 DESCRIPTION:

Proposed redetermination of the municipal boundaries of Ramotshere Moiloa Local Municipality (NW385), Ngaka Modiri Molema District Municipality (DC38), Moses Kotane Local Municipality (NW375), and Bojanala District Municipality (DC37), by excluding the Farms Zamenkomst 81, Riekersdam 109, and Krielsrust 106 from the municipal areas of Ramotshere Moiloa Local Municipality (NW385), and Ngaka Modiri Molema District Municipality (DC38), and by including them into the municipal areas of Moses Kotane Local Municipality (NW375), and Bojanala District Municipality (DC37).



O
V
E
R
V
I
E
W
M
A
P

N

