



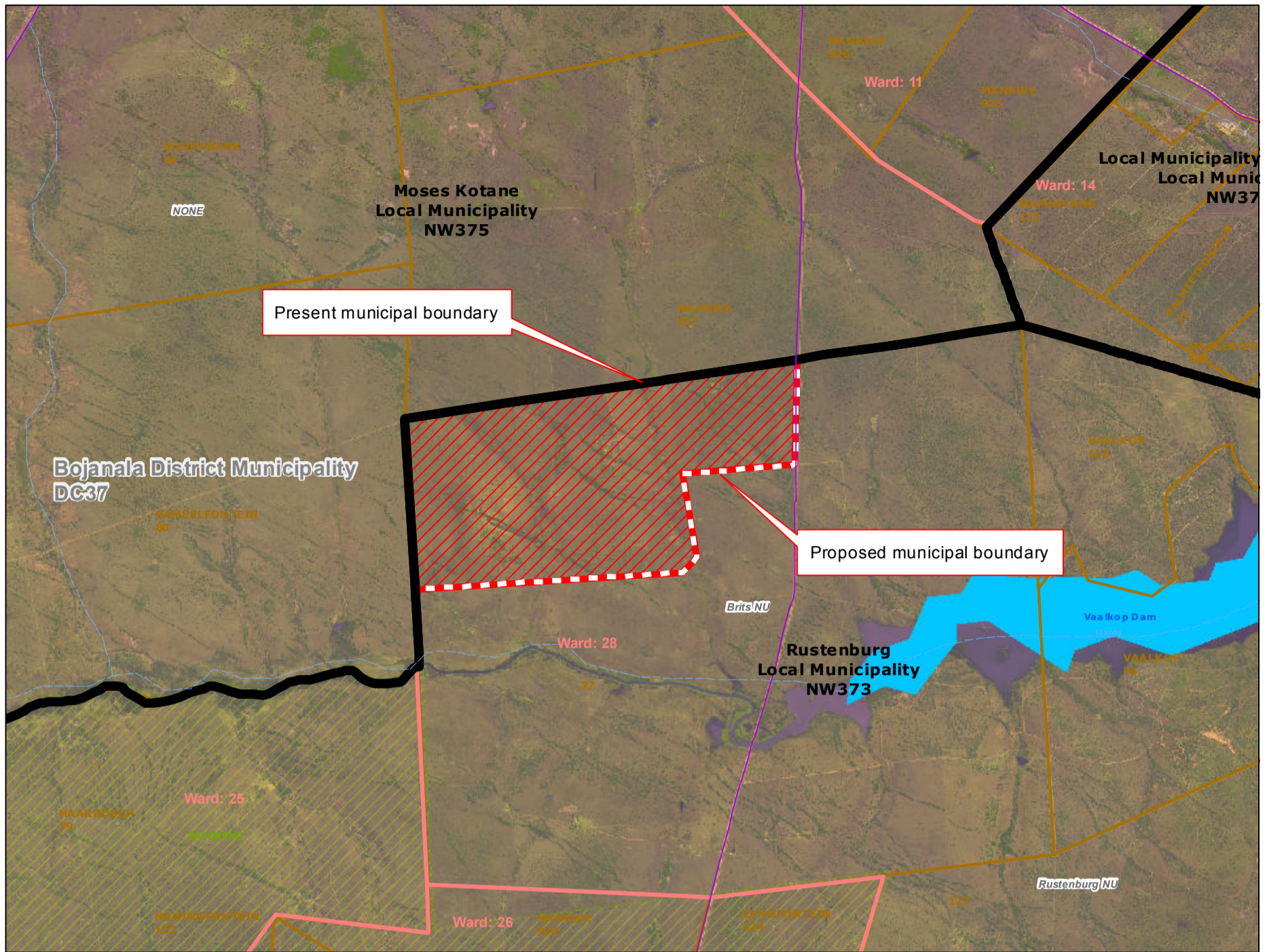
**Redetermination of municipal boundaries**

MAP NUMBER  
**DEM4332**

DATE  
**November 2012**

**Legend**

- District Municipalities
- Local / Metro Municipalities
- Proposed boundary change
- Traditional Council Areas
- Wards
- Sub Place
- Parent Farms
- Dams
- National Roads
- Main Roads
- Secondary Roads
- Streets
- Railways
- Rivers
- Towns
- Schools
- Health Facilities
- Police Stations
- Airports



**SECTION 26 DESCRIPTION:**

Proposed redetermination of the municipal boundaries of Moses Kotane Local Municipality (NW375) and Rustenburg Local Municipality (NW373), by excluding a portion of Mankwe 927 from the municipal area of Rustenburg Local Municipality (NW373), and by including it into the municipal area of Moses Kotane Local Municipality (NW375)



OVERVIEW MAP

