

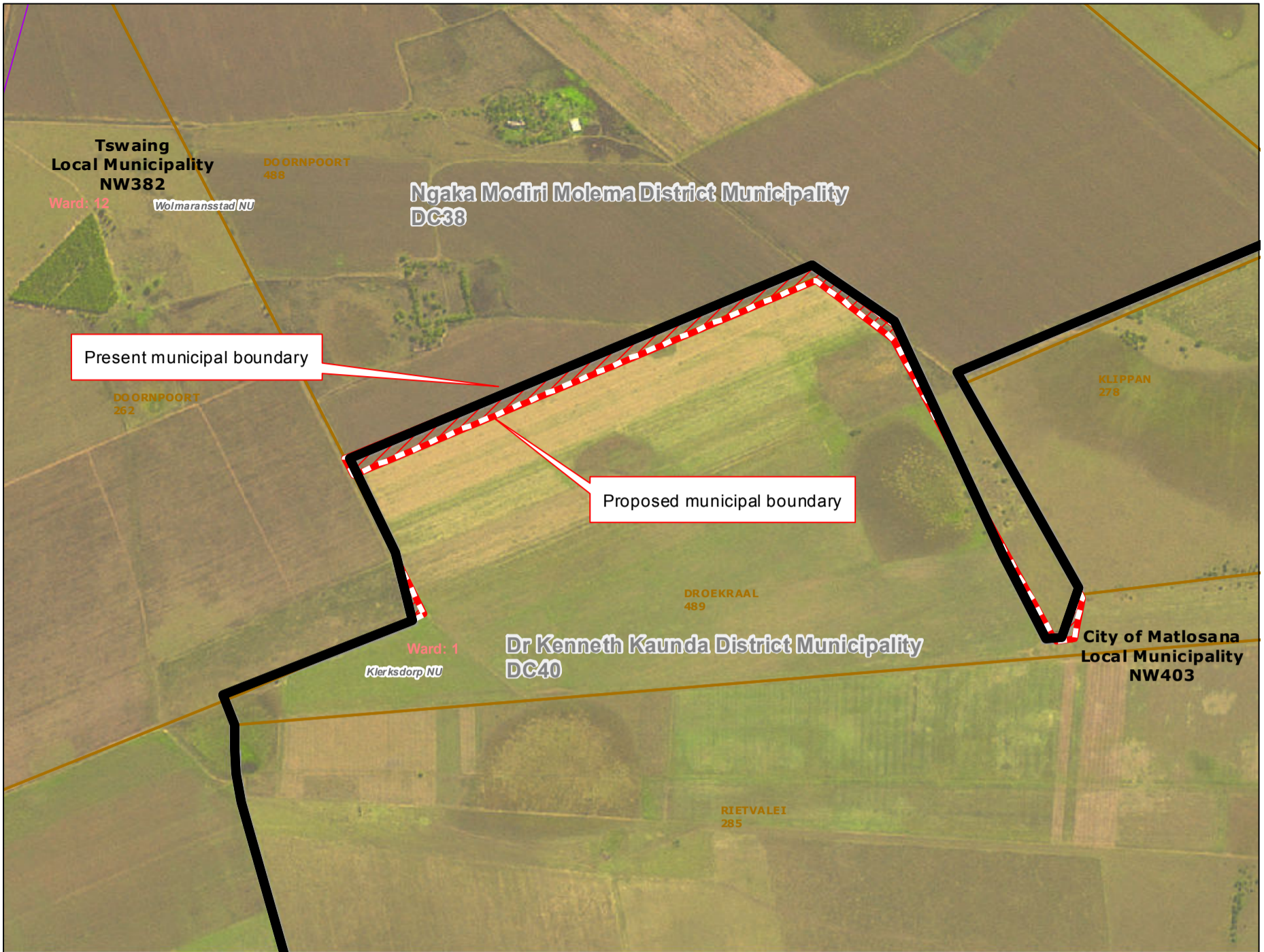
Redetermination of municipal boundaries

MAP NUMBER
DEM4337

DATE
November 2012


Legend

- District Municipalities
- Local / Metro Municipalities
- Proposed boundary change
- Traditional Council Areas
- Wards
- Sub Place
- Parent Farms
- Dams
- National Roads
- Main Roads
- Secondary Roads
- Streets
- Railways
- Rivers
- Towns
- Schools
- Health Facilities
- Police Stations
- Airports



SECTION 26 DESCRIPTION:

Proposed redetermination of the municipal boundaries of City of Matlosana Local Municipality (NW403), Dr Kenneth Kaunda District Municipality (DC40), Tswaing Local Municipality (NW382) and Ngaka Modiri Molema District Municipality (DC38), by excluding portions of farms Doornpoort 488 from the municipal areas of Matlosana Local Municipality (NW403), Dr Kenneth Kaunda District Municipality (DC40), and by including it into the municipal areas of Tswaing Local Municipality (NW382) and Ngaka Modiri Molema District Municipality (DC38)



**O
V
E
R
V
I
E
W
M
A
P**

