

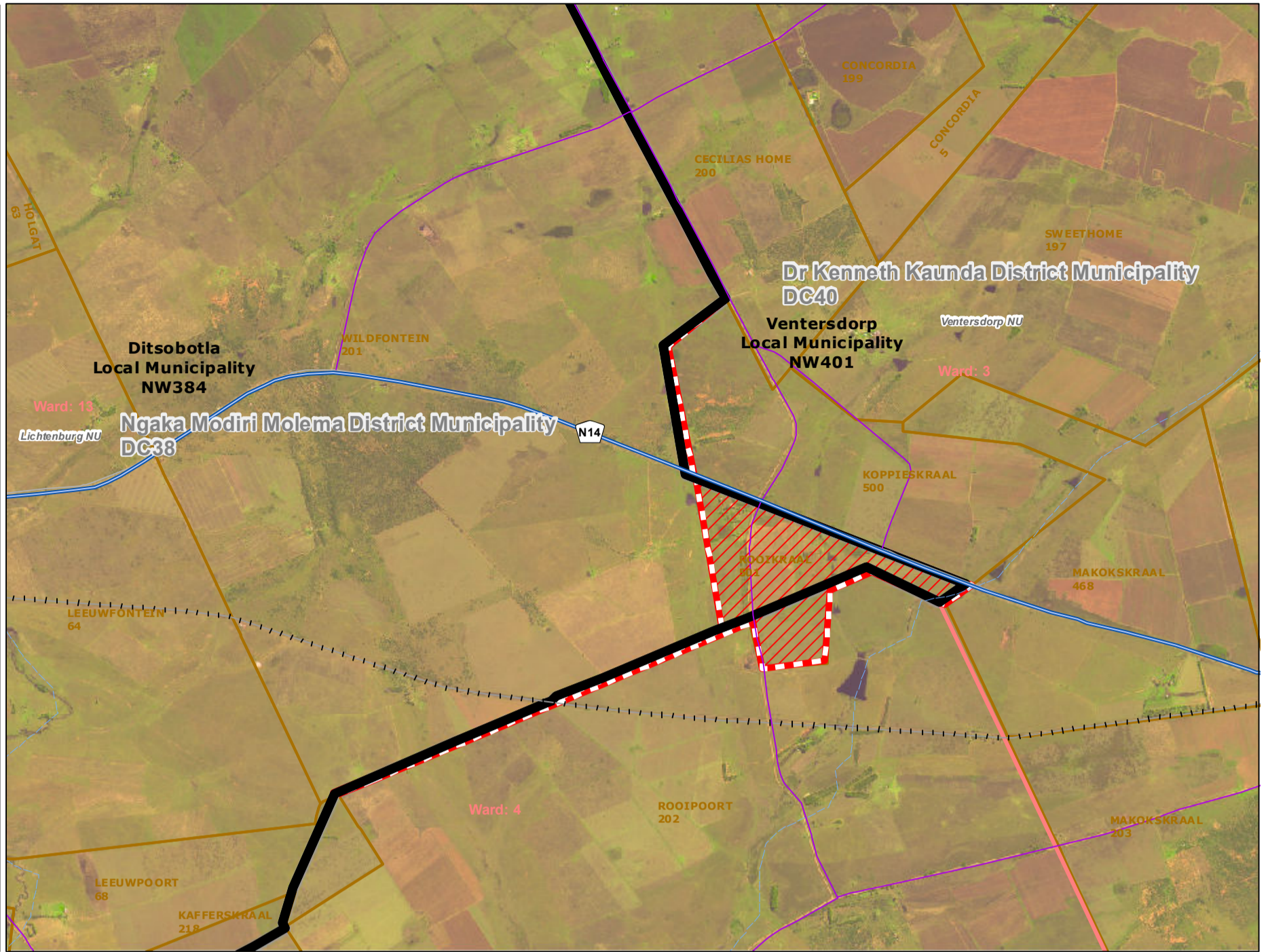


**Redetermination
of
municipal
boundaries**

MAP NUMBER
DEM4338

DATE
November 2012

- Legend**
- District Municipalities
 - Local / Metro Municipalities
 - Proposed boundary change
 - Traditional Council Areas
 - Wards
 - Sub Place
 - Parent Farms
 - Dams
 - National Roads
 - Main Roads
 - Secondary Roads
 - Streets
 - Railways
 - Rivers
 - Towns
 - Schools
 - Health Facilities
 - Police Stations
 - Airports



**SECTION 26
DESCRIPTION:**

Proposed redetermination of the municipal boundaries of Ditsobotla Local Municipality (NW384), Ngaka Modiri Molema District Municipality (DC38), Venterdorp Local Municipality (NW401) and Dr Kenneth Kaunda District Municipality (DC40), by excluding farm Rooikraal 501 and portions of the farms Koppieskraal 500 and Rooipoort 202 from the municipal areas of Ditsobotla Local Municipality (NW384) and Ngaka Modiri Molema District Municipality (DC38), and by including them into the municipal areas of Venterdorp Local Municipality (NW401) and Dr Kenneth Kaunda District Municipality (DC40)



O
V
E
R
V
I
E
W
M
A
P

