

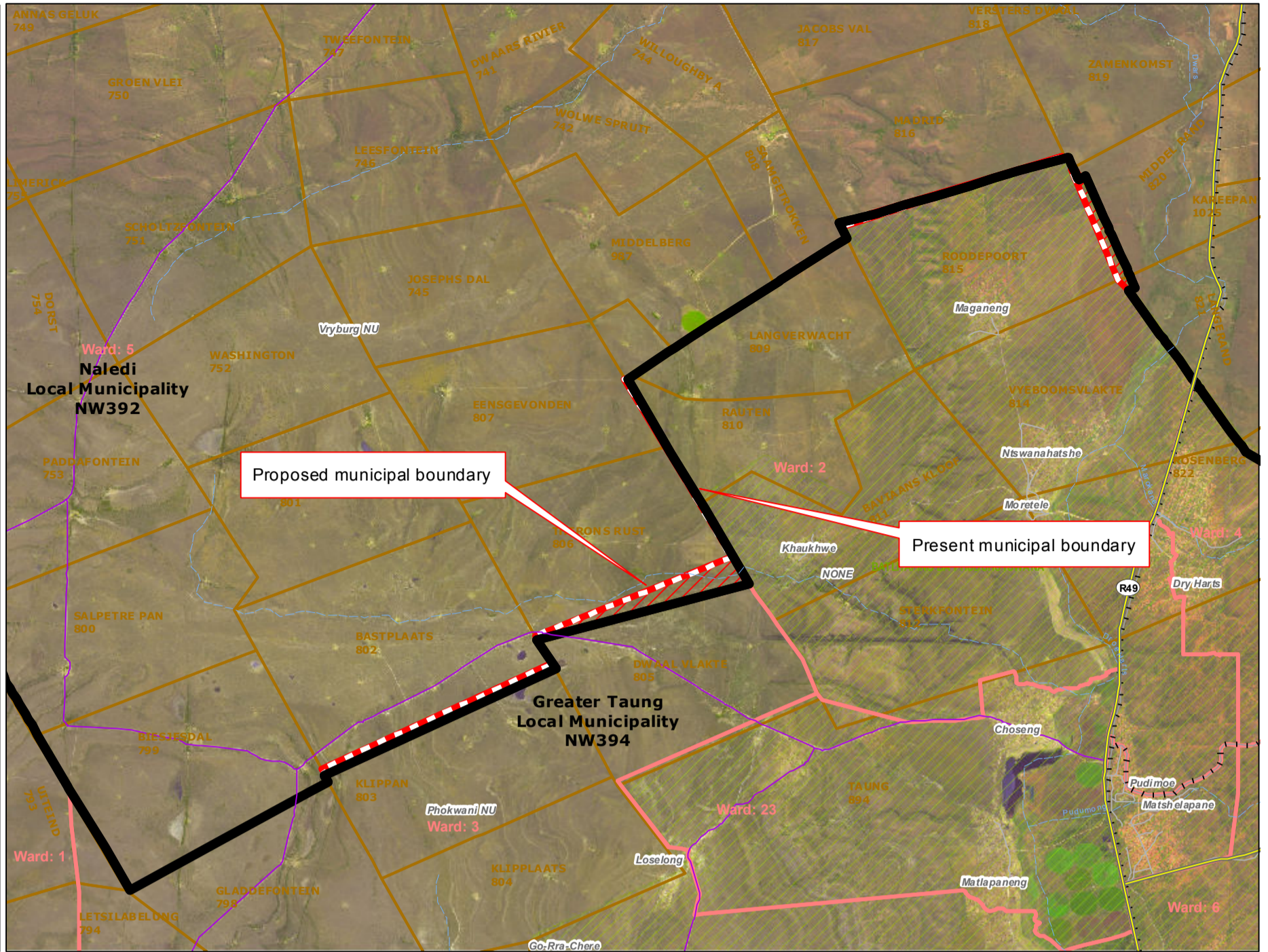


Redetermination of municipal boundaries

MAP NUMBER
DEM4345

DATE
November 2012

- Legend**
- District Municipalities
 - Local / Metro Municipalities
 - Proposed boundary change
 - Traditional Council Areas
 - Wards
 - Sub Place
 - Parent Farms
 - Dams
 - National Roads
 - Main Roads
 - Secondary Roads
 - Streets
 - Railways
 - Rivers
 - Towns
 - Schools
 - Health Facilities
 - Police Stations
 - Airports



SECTION 26 DESCRIPTION:

Proposed redetermination of the municipal boundaries of Greater Taung Local Municipality (NW394) and Naledi Local Municipality (NW392), by excluding a portion of farms Klippan 803, Dwaal vlakte 805 and Rauten 810 from the municipal area of Naledi Local Municipality (NW392) and by including them into the municipal area of Greater Taung Local Municipality (NW394), and by excluding portions of farms Middel Rand 820 and Madrid 816 from the Municipal area of Greater Taung Local Municipality (NW394) and by including them into the municipal area Naledi Local Municipality (NW392)



O
V
E
R
V
I
E
W
M
A
P

